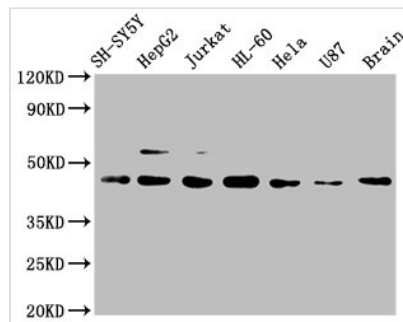




# CCR9 Recombinant Monoclonal Antibody

<b>Product Code</b>	CSB-RA004848A0HU
<b>Abbreviation</b>	C-C chemokine receptor type 9
<b>Storage</b>	Upon receipt, store at -20°C or -80°C. Avoid repeated freeze.
<b>Uniprot No.</b>	P51686
<b>Immunogen</b>	A synthesized peptide derived from human CCR9
<b>Species Reactivity</b>	Human, Mouse
<b>Tested Applications</b>	ELISA, WB, IF, IP; Recommended dilution: WB:1:500-1:5000, IF:1:20-1:200, IP:1:200-1:1000
<b>Relevance</b>	Receptor for chemokine SCYA25/TECK. Subsequently transduces a signal by increasing the intracellular calcium ions level.
<b>Form</b>	Liquid
<b>Conjugate</b>	Non-conjugated
<b>Storage Buffer</b>	Rabbit IgG in phosphate buffered saline , pH 7.4, 150mM NaCl, 0.02% sodium azide and 50% glycerol.
<b>Purification Method</b>	Affinity-chromatography
<b>Isotype</b>	Rabbit IgG
<b>Clonality</b>	Monoclonal
<b>Alias</b>	C-C chemokine receptor type 9, C-C CKR-9, CC-CKR-9, CCR-9, G-protein coupled receptor 28, GPR-9-6, CDw199, CCR9, GPR28
<b>Immunogen Species</b>	Homo sapiens (Human)
<b>Research Area</b>	Immunology
<b>Gene Names</b>	CCR9
<b>Clone No.</b>	4G2

## Image



### Western Blot

Positive WB detected in: SH-SY5Y whole cell lysate, HepG2 whole cell lysate, Jurkat whole cell lysate, HL-60 whole cell lysate, Hela whole cell lysate, U87 whole cell lysate, Mouse brain tissue

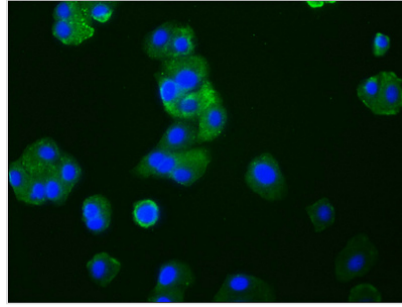
All lanes: CCR9 antibody at 1μg/ml

Secondary

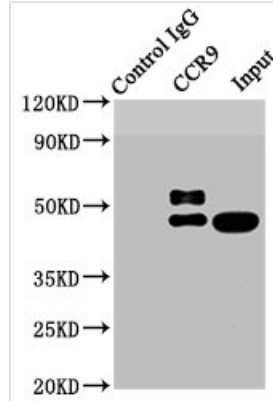
Goat polyclonal to rabbit IgG at 1/50000 dilution

Predicted band size: 43, 41 KDa

Observed band size: 43 KDa



Immunofluorescence staining of HepG2 cells with CSB-RA004848A0HU at 1:33, counter-stained with DAPI. The cells were fixed in 4% formaldehyde, permeabilized using 0.2% Triton X-100 and blocked in 10% normal Goat Serum. The cells were then incubated with the antibody overnight at 4?. The secondary antibody was Alexa Fluor 488-conjugated AffiniPure Goat Anti-Rabbit IgG (H+L).



Immunoprecipitating CCR9 in HL-60 whole cell lysate

Lane 1: Rabbit control IgG instead of CSB-RA004848A0HU in HL-60 whole cell lysate. For western blotting, a HRP-conjugated Protein G antibody was used as the secondary antibody (1/2000)

Lane 2: CSB-RA004848A0HU (3μg) + HL-60 whole cell lysate (500μg)

Lane 3: HL-60 whole cell lysate (20μg)

## Description

The CCR9 recombinant monoclonal antibody is produced by transfecting the antibody DNA gene-vector clones into the cell line for in vitro expression. The antibody DNA gene encodes a synthesized peptide derived from human CCR9 protein. This CCR9 antibody can react with the CCR9 protein of human- and mouse-origin. It is purified through the affinity-chromatography approach. And it is recommended for ELISA, WB, IF, and IP applications.

CCR9 is mainly distributed in immature T lymphocytes and on the surface of intestinal cells, and it plays a role in T lymphocyte development and tissue-specific homing when bound to its specific and CCL25. CCR9 has been found to be highly expressed in a wide range of cancers and has been linked to tumor chemoresistance and metastasis. It is therefore a potential tumor biomarker in diagnosis and therapy.