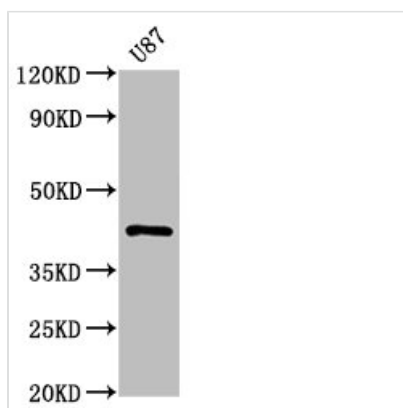




PRKAR1A Recombinant Monoclonal Antibody

Product Code	CSB-RA018694A0HU
Abbreviation	cAMP-dependent protein kinase type I-alpha regulatory subunit
Storage	Upon receipt, store at -20°C or -80°C. Avoid repeated freeze.
Uniprot No.	P10644
Immunogen	A synthesized peptide derived from human PRKAR1A
Species Reactivity	Human
Tested Applications	ELISA, WB, IF; Recommended dilution: WB:1:500-1:5000, IF:1:20-1:200
Relevance	Regulatory subunit of the cAMP-dependent protein kinases involved in cAMP signaling in cells.
Form	Liquid
Conjugate	Non-conjugated
Storage Buffer	Rabbit IgG in 10mM phosphate buffered saline , pH 7.4, 150mM sodium chloride, 0.05% BSA, 0.02% sodium azide and 50% glycerol.
Purification Method	Affinity-chromatography
Isotype	Rabbit IgG
Clonality	Monoclonal
Alias	cAMP-dependent protein kinase type I-alpha regulatory subunit, Tissue-specific extinguisher 1, TSE1, PRKAR1A, PKR1, PRKAR1, TSE1
Immunogen Species	Homo sapiens (Human)
Research Area	Signal Transduction
Target Names	PRKAR1A
Clone No.	1C3

Image



Western Blot

Positive WB detected in: U87 whole cell lysate

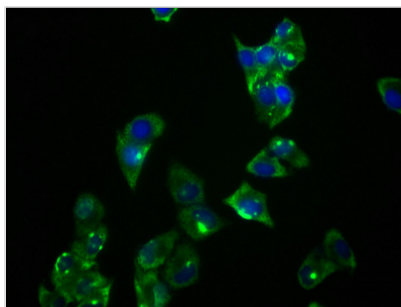
All lanes: PRKAR1A antibody at 1.1µg/ml

Secondary

Goat polyclonal to rabbit IgG at 1/50000 dilution

Predicted band size: 43, 39 KDa

Observed band size: 43 KDa



Immunofluorescence staining of Hela cells with CSB-RA018694A0HU at 1:36, counter-stained with DAPI. The cells were fixed in 4% formaldehyde, permeabilized using 0.2% Triton X-100 and blocked in 10% normal Goat Serum. The cells were then incubated with the antibody overnight at 4?. The secondary antibody was Alexa Fluor 488-conjugated AffiniPure Goat Anti-Rabbit IgG (H+L).

Usage

For Research Use Only. Not for use in diagnostic or therapeutic procedures.