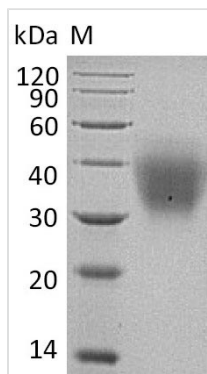




Recombinant Human Kit ligand (KITLG), partial (Active)

Product Code	CSB-AP003881HU
Abbreviation	Recombinant Human KITLG protein, partial (Active)
Uniprot No.	P21583
Form	Lyophilized powder
Storage Buffer	Lyophilized from a 0.2 μ m filtered 20 mM PB, 150 mM NaCl, pH 7.4
Product Type	Growth Factor
Immunogen Species	Homo sapiens (Human)
Biological Activity	The ED50 as determined in a cell proliferation assay using TF β 1 human erythroleukemic cells is 2-10 ng/ml.
Purity	Greater than 95% as determined by SDS-PAGE.
Sequence	EGICRNRVTNNVKDVTKLVANLPKDYMITLKYVPGMDVLP SHCWISEM VVQLS DSLTDLLDKFSNISEGLSNYSIIDKLVNIVDDLVECVKENS SKDLKKSFKSPEPRL FTPEEFFRIFNRSIDAFKDFVVASETSDCVV SSTLSPEKDSRVSVTKPFMLPPV AASSLRNDSSSSNRKAKNPPGDSSLH
Research Area	Immunology
Source	Mammalian cell
Target Names	KITLG
Expression Region	26-214aa
Notes	Repeated freezing and thawing is not recommended. Store working aliquots at 4°C for up to one week.
Tag Info	C-terminal 6xHis-tagged
Mol. Weight	22 kDa
Protein Length	Partial

Image



(Tris-Glycine gel) Discontinuous SDS-PAGE (reduced) with 5% enrichment gel and 15% separation gel.

**Endotoxin**

Less than 1.0 EU/ μ g as determined by LAL method.

Reconstitution

We recommend that this vial be briefly centrifuged prior to opening to bring the contents to the bottom. Please reconstitute protein in deionized sterile water to a concentration of 0.1-1.0 mg/mL. We recommend to add 5-50% of glycerol (final concentration) and aliquot for long-term storage at -20°C/-80°C. Our default final concentration of glycerol is 50%. Customers could use it as reference.

Shelf Life

The shelf life is related to many factors, storage state, buffer ingredients, storage temperature and the stability of the protein itself. Generally, the shelf life of liquid form is 6 months at -20°C/-80°C. The shelf life of lyophilized form is 12 months at -20°C/-80°C.