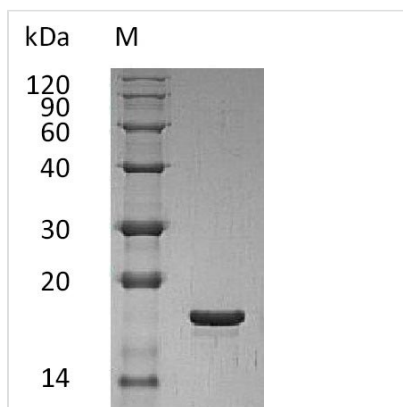




# Recombinant Human Leukemia inhibitory factor (LIF) (Active)

<b>Product Code</b>	CSB-AP004001HU
<b>Abbreviation</b>	Recombinant Human LIF protein (Active)
<b>Uniprot No.</b>	P15018
<b>Storage Buffer</b>	Lyophilized from a 0.2 $\mu$ m filtered solution of 20mM PB,2% Sucrose,4% Mannitol,0.02% Tween 80,pH7.4
<b>Product Type</b>	Growth Factors
<b>Immunogen Species</b>	Homo sapiens (Human)
<b>Biological Activity</b>	The ED50 as determined in a cell proliferation assay using TF?1 human erythroleukemic cells is 25-150 pg/ml.
<b>Purity</b>	Greater than 95% as determined by SDS-PAGE.
<b>Sequence</b>	SPLPITPVNATCAIRHPCHNNLMNQIRSQLAQLNGSANALFILYYTAQGEPFPN NLDKLCGPNVTDFFPPFHANGTEKAKLVELYRIVVYLGTS LGNITRDQKILNPSAL SLHSKLNATADILRGLLSNVLCRLCSKYHVGHVDTVYGPDTSGKDVFQKKKLG CQLLGKYKQIIAVLAQAF
<b>Research Area</b>	Cancer
<b>Source</b>	E.coli
<b>Target Names</b>	LIF
<b>Expression Region</b>	23-202aa
<b>Tag Info</b>	Tag-Free
<b>Mol. Weight</b>	19.7 kDa
<b>Protein Length</b>	Full Length of Mature Protein

## Image



(Tris-Glycine gel) Discontinuous SDS-PAGE (reduced) with 5% enrichment gel and 15% separation gel.

<b>Endotoxin</b>	Less than 0.01 EU/ $\mu$ g as determined by LAL method.
<b>Shelf Life</b>	The shelf life is related to many factors, storage state, buffer ingredients, storage temperature and the stability of the protein itself.



Generally, the shelf life of liquid form is 6 months at -20°C/-80°C. The shelf life of lyophilized form is 12 months at -20°C/-80°C.