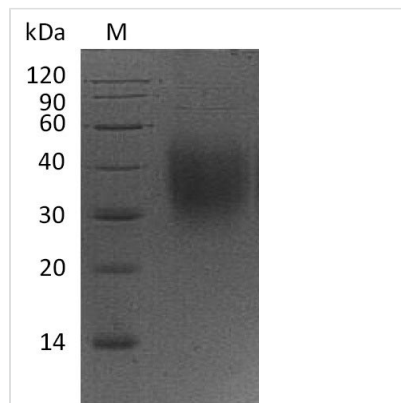




# Recombinant Mouse Leukocyte surface antigen CD47 (Cd47), partial (Active)

|                            |  |
|----------------------------|--|
| <b>Product Code</b>        | CSB-AP005351MO   |
| <b>Uniprot No.</b>         | Q61735   |
| <b>Form</b>                | Lyophilized powder   |
| <b>Storage Buffer</b>      | Lyophilized from a 0.2 μm filtered 1xPBS, pH 7.4   |
| <b>Product Type</b>        | Immune Checkpoint  |
| <b>Immunogen Species</b>   | Mus musculus (Mouse)   |
| <b>Biological Activity</b> | The ED50 as determined by its ability to bind Mouse SIRPA in functional ELISA is less than 20 ug/ml.   |
| <b>Purity</b>              | Greater than 95% as determined by SDS-PAGE.  |
| <b>Sequence</b>            | QLLSNVNSIEFTSCNETVVIPCIVRNVEAQSTEEMFVKWKLNKSIFIFIYDGNKN<br>STTTDQNFTSAKISVSDLINGIASLKMDKRDAMVGNVTCEVTELSREGKTVIELK<br>NRTAFNTDQGSACSYYEEEEKGGCKLVSWFSP |
| <b>Research Area</b>       | Cancer   |
| <b>Source</b>              | Mammalian cell   |
| <b>Target Names</b>        | Cd47   |
| <b>Expression Region</b>   | 19-158aa   |
| <b>Notes</b>               | Repeated freezing and thawing is not recommended. Store working aliquots at 4°C for up to one week.  |
| <b>Tag Info</b>            | C-terminal 6xHis-tagged  |
| <b>Mol. Weight</b>         | 16.7 kDa   |
| <b>Protein Length</b>      | Partial of Isoform 2   |

## Image



(Tris-Glycine gel) Discontinuous SDS-PAGE (reduced) with 5% enrichment gel and 15% separation gel.

|                       |  |
|-----------------------|--|
| <b>Endotoxin</b>      | Less than 1.0 EU/μg as determined by LAL method.                                 |
| <b>Reconstitution</b> | We recommend that this vial be briefly centrifuged prior to opening to bring the |



contents to the bottom. Please reconstitute protein in deionized sterile water to a concentration of 0.1-1.0 mg/mL. We recommend to add 5-50% of glycerol (final concentration) and aliquot for long-term storage at -20°C/-80°C. Our default final concentration of glycerol is 50%. Customers could use it as reference.

### Shelf Life

The shelf life is related to many factors, storage state, buffer ingredients, storage temperature and the stability of the protein itself.

Generally, the shelf life of liquid form is 6 months at -20°C/-80°C. The shelf life of lyophilized form is 12 months at -20°C/-80°C.