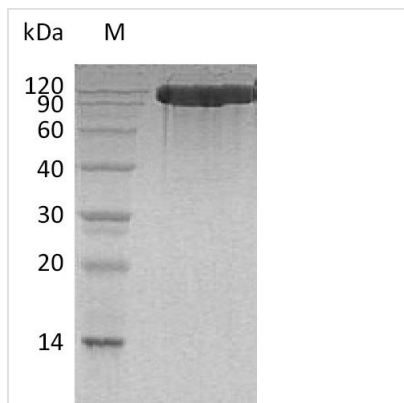




# Recombinant Human Angiotensin-converting enzyme 2 (ACE2), partial (Active)

<b>Product Code</b>	CSB-AP005671HU
<b>Abbreviation</b>	Recombinant Human ACE2 protein, partial (Active)
<b>Uniprot No.</b>	Q9BYF1
<b>Form</b>	Liquid
<b>Storage Buffer</b>	0.2 $\mu$ m Filtered 20 mM Tris-HCl, 300 mM NaCl, 1 mM ZnCl <sub>2</sub> , 10% Glycerol, pH 7.4
<b>Product Type</b>	Others
<b>Immunogen Species</b>	Homo sapiens (Human)
<b>Biological Activity</b>	Loaded 2019-nCoV S Protein RBD-mFc on AMC Biosensor, can bind Human ACE-2-His with an affinity constant of 2.06 nM as determined in BLI assay.
<b>Purity</b>	Greater than 95% as determined by SDS-PAGE.
<b>Sequence</b>	<p>           QSTIEEQAKTFLDKFNHEAEDLFYQSSLASWNYNTNITEENVQNMNAGDKW            SAFLKEQSTLAQMYPLQEIQNLTVKLQLQALQQNGSSVLSSEDKSKRLNTILNTM            STIYSTGKVCNPDNPQECLLLEPGLNEIMANSLDYNERLWAWESWRSEVGKQ            LRPLYEEYVVLKNEMARANHEDYGDYWRGDYEVNGVDGYDYSRGQLIEDV            EHTFEEIKPLYEHLHAYVRAKLMNAYPSYISPIGCLPAHLLGDMWGRFWTNLY            SLTVPFGQKPNIDVTDAMVDQAWDAQRIFKEAEKFFVSVGLPNMTQGFWENS            MLTDPGNVQKAVCHPTAWDLGKGDFRILMCTKVTMDDFLTAHHEMGHIQYD            MAYAAQPFLLRNGANEGFHEAVGEIMSLSAATPKHLKSIGLLSPDFQEDNETEI            NFLLKQALTIVGTLPTMLEKWRWMVFKGEIPKDQWMKKWWEMKREIVGVV            EPVPHDETYCDPASLFHVSNDYSFIRYYTRTLYQFQFQEALCQAAKHEGPLHK            CDISNSTEAGQKLFNMLRLGKSEPWTALENVVGAKNMNVRPLLNYFEPLFT            WLKDQNKNSFVGWSTDWSPYADQSIKVRISLKSALGDKAYEWNNDNEMYLFR            SSVAYAMRQYFLKVKNQMILFGCEEDVRVANLKRISFNFFVTAPKNVSDIIPRT            EVEKAIRMSRSRINDAFRLNDNSLEFLGIQPTLGPPNQPPVS         </p>
<b>Research Area</b>	Cardiovascular
<b>Source</b>	Mammalian cell
<b>Target Names</b>	ACE2
<b>Expression Region</b>	18-740aa
<b>Tag Info</b>	C-terminal 6xHis-tagged
<b>Mol. Weight</b>	84.63 kDa
<b>Protein Length</b>	Partial
<b>Image</b>	



(Tris-Glycine gel) Discontinuous SDS-PAGE (reduced) with 5% enrichment gel and 15% separation gel.

**Endotoxin**

Less than 1.0 EU/ $\mu$ g as determined by LAL method.

**Shelf Life**

The shelf life is related to many factors, storage state, buffer ingredients, storage temperature and the stability of the protein itself.

Generally, the shelf life of liquid form is 6 months at -20°C/-80°C. The shelf life of lyophilized form is 12 months at -20°C/-80°C.