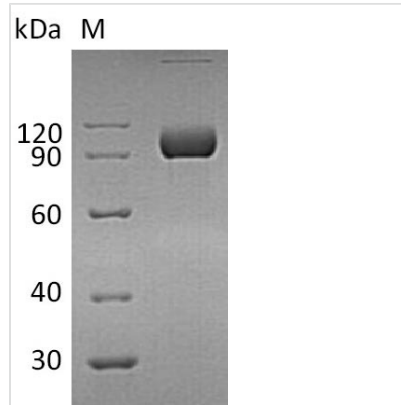




Recombinant Human Ephrin type-A receptor 4 (EPHA4), partial (Active)

Product Code	CSB-AP005681HU
Uniprot No.	P54764
Form	Lyophilized powder
Storage Buffer	Lyophilized from a 0.2 µm Filtered 20 mM Tris-HCl, 150 mM NaCl, pH 8.0
Product Type	Other
Immunogen Species	Homo sapiens (Human)
Biological Activity	The ED50 as determined by its ability to binding recombinant human Ephrin-A5 used funtional ELISA is 66.8nM when EphA4 2ug/ml in a solid phases.?
Purity	Greater than 95% as determined by SDS-PAGE.
Sequence	VTGSRVYPANEVTLTLD SRSVQGELGWIASPLEGGWEEVSIMDEKNTPIRTYQV CNVMEPSQNNWLR TDWITREGAQRVYIEIKFTLRDCNSLPGVMGTCKETFNLY YYESDNDKERFIRENQFVKIDTIAADESFTQVDIGDRIMKLNTEIRDVGPLSKKG FYLAFQDVGACIALVSVRVFYKKCPLTVRNLAQFPDTITGADTSSLVEVRGSCV NNSEEKDVPKMYCGADGEWLVPIGNCLCNAGHEERSGECQACKIGYYKALST DATCAKCPPHSYSVWEGATSCTCDRGFFRADNDAASMPCTRPPSAPLNLISN VNETSVNLEWSSPQNTGGRQDISYNNVCKKCGAGDPSKCRPCGSGVHYTPQ QNGLKTTKVSITDLLAHTNYTFEIWA VNGVSKYNPNPDQSVSVTVTTNQAAPS SIALVQAKEVTRY SVALAWLEPDRPNGVILEYEVKYYEKDQNER SYRIVRTAAR NTDIKGLNPLTSYVFHVRARTAAGYGDFSEPLEVTTNTVPSRIIGDGANST
Research Area	Signal Transduction
Source	Mammalian cell
Target Names	EPHA4
Expression Region	20-547aa
Notes	Repeated freezing and thawing is not recommended. Store working aliquots at 4°C for up to one week.
Tag Info	C-terminal hFc-tagged
Mol. Weight	85.6 kDa
Protein Length	Partial
Image	



(Tris-Glycine gel) Discontinuous SDS-PAGE (reduced) with 5% enrichment gel and 15% separation gel.

Endotoxin

Less than 1.0 EU/ μ g as determined by LAL method.

Reconstitution

We recommend that this vial be briefly centrifuged prior to opening to bring the contents to the bottom. Please reconstitute protein in deionized sterile water to a concentration of 0.1-1.0 mg/mL. We recommend to add 5-50% of glycerol (final concentration) and aliquot for long-term storage at -20°C/-80°C. Our default final concentration of glycerol is 50%. Customers could use it as reference.

Shelf Life

The shelf life is related to many factors, storage state, buffer ingredients, storage temperature and the stability of the protein itself. Generally, the shelf life of liquid form is 6 months at -20°C/-80°C. The shelf life of lyophilized form is 12 months at -20°C/-80°C.