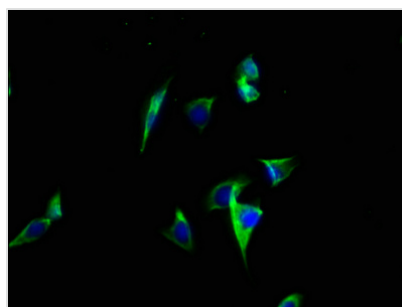




ATP2C2 Antibody

Product Code	CSB-PA002340LA01HU
Storage	Upon receipt, store at -20°C or -80°C. Avoid repeated freeze.
Uniprot No.	O75185
Immunogen	Recombinant Human Calcium-transporting ATPase type 2C member 2 protein (621-702AA)
Raised In	Rabbit
Species Reactivity	Human
Tested Applications	ELISA, IF; Recommended dilution: IF:1:50-1:200
Form	Liquid
Conjugate	Non-conjugated
Storage Buffer	Preservative: 0.03% Proclin 300 Constituents: 50% Glycerol, 0.01M PBS, pH 7.4
Purification Method	>95%, Protein G purified
Isotype	IgG
Clonality	Polyclonal
Alias	Calcium-transporting ATPase type 2C member 2 (ATPase 2C2) (EC 3.6.3.8) (Secretory pathway Ca(2+)-ATPase 2), ATP2C2, KIAA0703 SPCA2
Immunogen Species	Homo sapiens (Human)
Research Area	Signal Transduction
Target Names	ATP2C2

Image



Immunofluorescence staining of A549 cells with CSB-PA002340LA01HU at 1:100, counter-stained with DAPI. The cells were fixed in 4% formaldehyde, permeabilized using 0.2% Triton X-100 and blocked in 10% normal Goat Serum. The cells were then incubated with the antibody overnight at 4°C. The secondary antibody was Alexa Fluor 488-conjugated AffiniPure Goat Anti-Rabbit IgG(H+L).