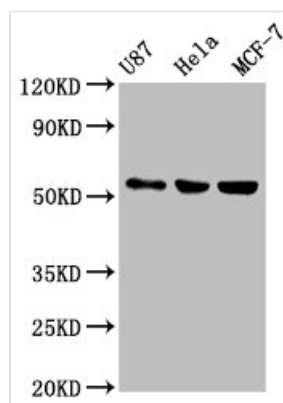




MEF2A Antibody

Product Code	CSB-PA013670LA01HU
Storage	Upon receipt, store at -20°C or -80°C. Avoid repeated freeze.
Uniprot No.	Q02078
Immunogen	Recombinant Human Myocyte-specific enhancer factor 2A protein (72-226AA)
Raised In	Rabbit
Species Reactivity	Human
Tested Applications	ELISA, WB; Recommended dilution: WB:1:100-1:1000
Form	Liquid
Conjugate	Non-conjugated
Storage Buffer	Preservative: 0.03% Proclin 300 Constituents: 50% Glycerol, 0.01M PBS, pH 7.4
Purification Method	>95%, Protein G purified
Isotype	IgG
Clonality	Polyclonal
Alias	Myocyte-specific enhancer factor 2A (Serum response factor-like protein 1), MEF2A, MEF2
Immunogen Species	Homo sapiens (Human)
Research Area	Signal Transduction
Target Names	MEF2A

Image



Western Blot

Positive WB detected in: U87 whole cell lysate, HeLa whole cell lysate, MCF-7 whole cell lysate

All lanes: MEF2A antibody at 1:500

Secondary

Goat polyclonal to rabbit IgG at 1/50000 dilution

Predicted band size: 55, 54, 47, 46 kDa

Observed band size: 55 kDa

Usage

For Research Use Only. Not for use in diagnostic or therapeutic procedures.