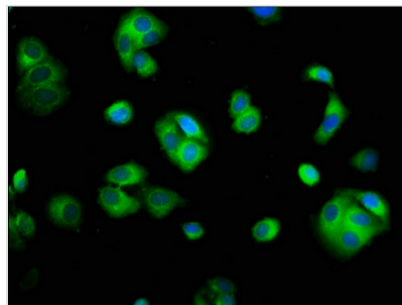




SMC2 Antibody

Product Code	CSB-PA021814LA01HU
Storage	Upon receipt, store at -20°C or -80°C. Avoid repeated freeze.
Uniprot No.	O95347
Immunogen	Recombinant Human Structural maintenance of chromosomes protein 2 protein (861-968AA)
Raised In	Rabbit
Species Reactivity	Human
Tested Applications	ELISA, IF; Recommended dilution: IF:1:50-1:200
Form	Liquid
Conjugate	Non-conjugated
Storage Buffer	Preservative: 0.03% Proclin 300 Constituents: 50% Glycerol, 0.01M PBS, pH 7.4
Purification Method	>95%, Protein G purified
Isotype	IgG
Clonality	Polyclonal
Alias	Structural maintenance of chromosomes protein 2 (SMC protein 2) (SMC-2) (Chromosome-associated protein E) (hCAP-E) (XCAP-E homolog), SMC2, CAPE SMC2L1
Immunogen Species	Homo sapiens (Human)
Research Area	Cell Biology
Target Names	SMC2

Image



Immunofluorescence staining of HepG2 cells with CSB-PA021814LA01HU at 1:100, counter-stained with DAPI. The cells were fixed in 4% formaldehyde, permeabilized using 0.2% Triton X-100 and blocked in 10% normal Goat Serum. The cells were then incubated with the antibody overnight at 4°C. The secondary antibody was Alexa Fluor 488-conjugated AffiniPure Goat Anti-Rabbit IgG(H+L).

Usage

For Research Use Only. Not for use in diagnostic or therapeutic procedures.