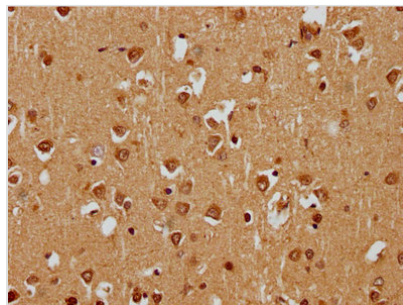




SKOR1 Antibody

Product Code	CSB-PA308064HA01HU
Storage	Upon receipt, store at -20°C or -80°C. Avoid repeated freeze.
Uniprot No.	P84550
Immunogen	Recombinant Human SKI family transcriptional corepressor 1 protein (744-965AA)
Raised In	Rabbit
Species Reactivity	Human
Tested Applications	ELISA, IHC; Recommended dilution: IHC:1:200-1:500
Form	Liquid
Conjugate	Non-conjugated
Storage Buffer	Preservative: 0.03% Proclin 300 Constituents: 50% Glycerol, 0.01M PBS, pH 7.4
Purification Method	>95%, Protein G purified
Isotype	IgG
Clonality	Polyclonal
Alias	SKI family transcriptional corepressor 1 (Functional Smad-suppressing element on chromosome 15) (Fussel-15) (LBX1 corepressor 1) (Ladybird homeobox corepressor 1), SKOR1, CORL1 FUSSEL15 LBXCOR1
Immunogen Species	Homo sapiens (Human)
Research Area	Others
Target Names	SKOR1

Image



IHC image of CSB-PA308064HA01HU diluted at 1:400 and staining in paraffin-embedded human brain tissue performed on a Leica BondTM system. After dewaxing and hydration, antigen retrieval was mediated by high pressure in a citrate buffer (pH 6.0). Section was blocked with 10% normal goat serum 30min at RT. Then primary antibody (1% BSA) was incubated at 4°C overnight. The primary is detected by a biotinylated secondary antibody and visualized using an HRP conjugated SP system.