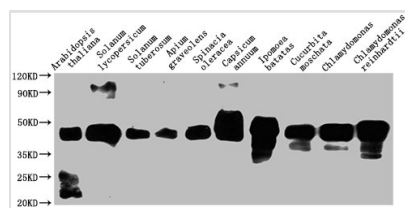




At1g32060 Antibody

| | |
|----------------------------|---|
| Product Code | CSB-PA326237OA01DOA |
| Storage | Upon receipt, store at -20°C or -80°C. Avoid repeated freeze. |
| Uniprot No. | P25697 |
| Immunogen | Peptide sequence from Arabidopsis thaliana Phosphoribulokinase, chloroplastic protein (223-235AA) |
| Raised In | Rabbit |
| Species Reactivity | Arabidopsis thaliana |
| Tested Applications | ELISA, WB; Recommended dilution: WB:1:1000-1:5000 |
| Form | Liquid |
| Conjugate | Non-conjugated |
| Storage Buffer | Preservative: 0.03% Proclin 300 Constituents: 50% Glycerol, 0.01M PBS, pH 7.4 |
| Purification Method | Antigen Affinity Purified |
| Isotype | IgG |
| Clonality | Polyclonal |
| Alias | Phosphoribulokinase, chloroplastic (PRK) (PRKase) (EC 2.7.1.19) (Phosphopentokinase) |
| Immunogen Species | Arabidopsis thaliana (Mouse-ear cress) |
| Research Area | Others |
| Target Names | At1g32060 |

Image



Western Blot

Positive WB detected in: Arabidopsis thaliana leaf tissue, Solanum lycopersicum leaf tissue, Solanum tuberosum leaf tissue, Apium graveolens tissue, Spinacia oleracea leaf tissue, Capsicum annuum leaf tissue, Ipomoea batatas leaf tissue, Cucurbita moschata leaf tissue, Chlamydomonas tissue, Chlamydomonas reinhardtii tissue

All lanes: At1g32060 antibody at 1:2000

Secondary

Goat polyclonal to rabbit IgG at 1/50000 dilution

Predicted band size: 45 kDa

Observed band size: 45 kDa