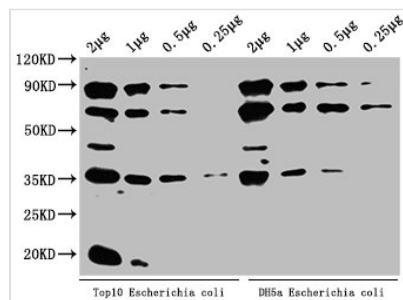




ppsA Antibody

Product Code	CSB-PA332921HA01ENV
Storage	Upon receipt, store at -20°C or -80°C. Avoid repeated freeze.
Uniprot No.	P23538
Immunogen	Recombinant Escherichia coli Phosphoenolpyruvate synthase protein (2-792AA)
Raised In	Rabbit
Species Reactivity	Escherichia coli
Tested Applications	ELISA, WB; Recommended dilution: WB:1:1000-1:5000
Form	Liquid
Conjugate	Non-conjugated
Storage Buffer	Preservative: 0.03% Proclin 300 Constituents: 50% Glycerol, 0.01M PBS, pH 7.4
Purification Method	>95%, Protein G purified
Isotype	IgG
Clonality	Polyclonal
Alias	Phosphoenolpyruvate synthase (PEP synthase) (EC 2.7.9.2) (Pyruvate, water dikinase), ppsA, pps
Immunogen Species	Escherichia coli(strain K12)
Research Area	Others
Target Names	ppsA

Image



Western Blot

Positive WB detected in: Top10 Escherichia coli lysate, DH5α Escherichia coli lysate

All lanes: ppsA antibody at 1:2000

Secondary

Goat polyclonal to rabbit IgG at 1/50000 dilution

Predicted band size: 88 kDa

Observed band size: 88 kDa

Usage

For Research Use Only. Not for use in diagnostic or therapeutic procedures.