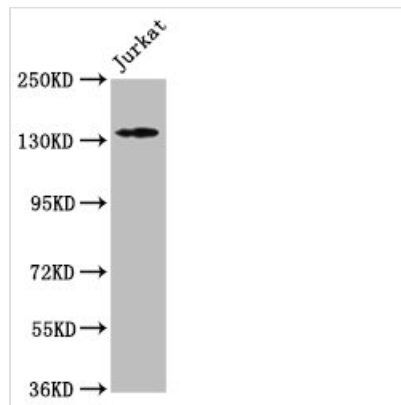




ATP2B3 Antibody

Product Code	CSB-PA613698LA01HU
Storage	Upon receipt, store at -20°C or -80°C. Avoid repeated freeze.
Uniprot No.	Q16720
Immunogen	Recombinant Human Plasma membrane calcium-transporting ATPase 3 protein (1057-1220AA)
Raised In	Rabbit
Species Reactivity	Human
Tested Applications	ELISA, WB, IF; Recommended dilution: WB:1:100-1:1000, IF:1:20-1:200
Form	Liquid
Conjugate	Non-conjugated
Storage Buffer	Preservative: 0.03% Proclin 300 Constituents: 50% Glycerol, 0.01M PBS, pH 7.4
Purification Method	>95%, Protein G purified
Isotype	IgG
Clonality	Polyclonal
Alias	Plasma membrane calcium-transporting ATPase 3 (PMCA3) (EC 3.6.3.8) (Plasma membrane calcium ATPase isoform 3) (Plasma membrane calcium pump isoform 3), ATP2B3
Immunogen Species	Homo sapiens (Human)
Research Area	Signal Transduction
Target Names	ATP2B3

Image



Western Blot

Positive WB detected in: Jurkat whole cell lysate

All lanes: ATP2B3 antibody at 1:500

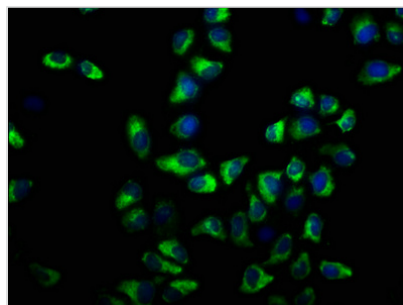
Secondary

Goat polyclonal to rabbit IgG at 1/50000 dilution

Predicted band size: 135, 129, 128, 133, 127,

125, 123 kDa

Observed band size: 135 kDa



Immunofluorescence staining of HeLa cells with CSB-PA613698LA01HU at 1:33, counter-stained with DAPI. The cells were fixed in 4% formaldehyde, permeabilized using 0.2% Triton X-100 and blocked in 10% normal Goat Serum. The cells were then incubated with the antibody overnight at 4°C. The secondary antibody was Alexa Fluor 488-conjugated AffiniPure Goat Anti-Rabbit IgG(H+L).

Usage

For Research Use Only. Not for use in diagnostic or therapeutic procedures.