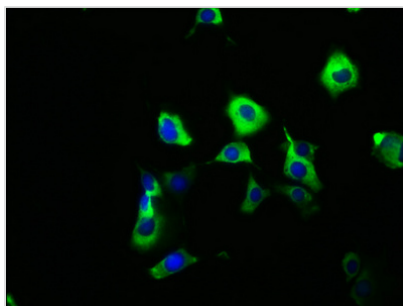




SYT6 Antibody

Product Code	CSB-PA716356LA01HU
Storage	Upon receipt, store at -20°C or -80°C. Avoid repeated freeze.
Uniprot No.	Q5T7P8
Immunogen	Recombinant Human Synaptotagmin-6 protein (104-425AA)
Raised In	Rabbit
Species Reactivity	Human
Tested Applications	ELISA, IF; Recommended dilution: IF:1:50-1:200
Form	Liquid
Conjugate	Non-conjugated
Storage Buffer	Preservative: 0.03% Proclin 300 Constituents: 50% Glycerol, 0.01M PBS, pH 7.4
Purification Method	>95%, Protein G purified
Isotype	IgG
Clonality	Polyclonal
Alias	Synaptotagmin-6 (Synaptotagmin VI) (SytVI), SYT6
Immunogen Species	Homo sapiens (Human)
Research Area	Neuroscience
Target Names	SYT6

Image



Immunofluorescence staining of MCF-7 cells with CSB-PA716356LA01HU at 1:166, counter-stained with DAPI. The cells were fixed in 4% formaldehyde, permeabilized using 0.2% Triton X-100 and blocked in 10% normal Goat Serum. The cells were then incubated with the antibody overnight at 4°C. The secondary antibody was Alexa Fluor 488-conjugated AffiniPure Goat Anti-Rabbit IgG(H+L).

Usage

For Research Use Only. Not for use in diagnostic or therapeutic procedures.