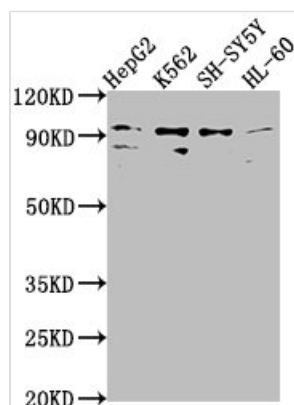




# NUGGC Antibody

<b>Product Code</b>	CSB-PA718072LA01HU
<b>Storage</b>	Upon receipt, store at -20°C or -80°C. Avoid repeated freeze.
<b>Uniprot No.</b>	Q68CJ6
<b>Immunogen</b>	Recombinant Human Nuclear GTPase SLIP-GC protein (1-228AA)
<b>Raised In</b>	Rabbit
<b>Species Reactivity</b>	Human
<b>Tested Applications</b>	ELISA, WB; Recommended dilution: WB:1:1000-1:5000
<b>Form</b>	Liquid
<b>Conjugate</b>	Non-conjugated
<b>Storage Buffer</b>	Preservative: 0.03% Proclin 300 Constituents: 50% Glycerol, 0.01M PBS, pH 7.4
<b>Purification Method</b>	>95%, Protein G purified
<b>Isotype</b>	IgG
<b>Clonality</b>	Polyclonal
<b>Alias</b>	Nuclear GTPase SLIP-GC (EC 3.6.1.-) (Speckled-like pattern in the germinal center), NUGGC, C8orf80
<b>Immunogen Species</b>	Homo sapiens (Human)
<b>Research Area</b>	Signal Transduction
<b>Target Names</b>	NUGGC

## Image



### Western Blot

Positive WB detected in: HepG2 whole cell lysate, K562 whole cell lysate, SH-SY5Y whole cell lysate, HL-60 whole cell lysate  
All lanes: NUGGC antibody at 1:2000

### Secondary

Goat polyclonal to rabbit IgG at 1/50000 dilution  
Predicted band size: 92 kDa  
Observed band size: 92 kDa