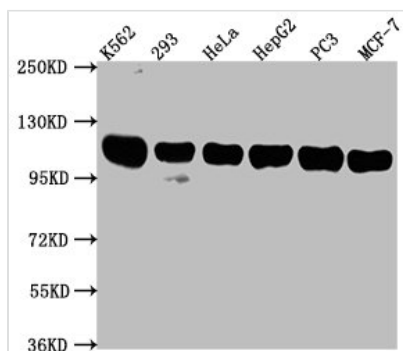




ITCH Antibody

Product Code	CSB-PA839346HA01HU
Storage	Upon receipt, store at -20°C or -80°C. Avoid repeated freeze.
Uniprot No.	Q96J02
Immunogen	Recombinant Human E3 ubiquitin-protein ligase Itchy homolog protein (29-303AA)
Raised In	Rabbit
Species Reactivity	Human
Tested Applications	ELISA, WB, IF; Recommended dilution: WB:1:1000-1:5000, IF:1:50-1:200
Form	Liquid
Conjugate	Non-conjugated
Storage Buffer	Preservative: 0.03% Proclin 300 Constituents: 50% Glycerol, 0.01M PBS, pH 7.4
Purification Method	>95%, Protein G purified
Isotype	IgG
Clonality	Polyclonal
Alias	E3 ubiquitin-protein ligase Itchy homolog (Itch) (EC 2.3.2.26) (Atrophin-1-interacting protein 4) (AIP4) (HECT-type E3 ubiquitin transferase Itchy homolog) (NFE2-associated polypeptide 1) (NAPP1), ITCH
Immunogen Species	Homo sapiens (Human)
Research Area	Cell Biology
Target Names	ITCH

Image



Western Blot

Positive WB detected in: K562 whole cell lysate, 293 whole cell lysate, HeLa whole cell lysate, HepG2 whole cell lysate, PC3 whole cell lysate, MCF-7 whole cell lysate

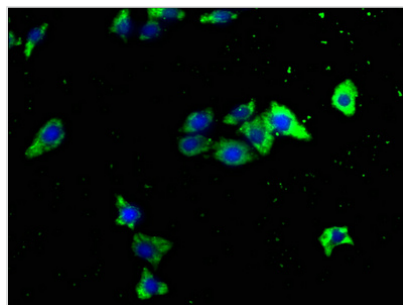
All lanes: ITCH antibody at 1:2000

Secondary

Goat polyclonal to rabbit IgG at 1/50000 dilution

Predicted band size: 103, 99, 87 kDa

Observed band size: 103 kDa



Immunofluorescence staining of HepG2 cells with CSB-PA839346HA01HU at 1:133, counter-stained with DAPI. The cells were fixed in 4% formaldehyde, permeabilized using 0.2% Triton X-100 and blocked in 10% normal Goat Serum. The cells were then incubated with the antibody overnight at 4°C. The secondary antibody was Alexa Fluor 488-conjugated AffiniPure Goat Anti-Rabbit IgG(H+L).

Usage

For Research Use Only. Not for use in diagnostic or therapeutic procedures.