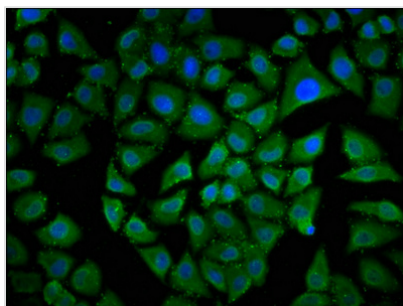




MKL1 Antibody

Product Code	CSB-PA853375LA01HU
Storage	Upon receipt, store at -20°C or -80°C. Avoid repeated freeze.
Uniprot No.	Q969V6
Immunogen	Recombinant Human MKL/myocardin-like protein 1 protein (674-812AA)
Raised In	Rabbit
Species Reactivity	Human
Tested Applications	ELISA, IF; Recommended dilution: IF:1:50-1:200
Form	Liquid
Conjugate	Non-conjugated
Storage Buffer	Preservative: 0.03% Proclin 300 Constituents: 50% Glycerol, 0.01M PBS, pH 7.4
Purification Method	>95%, Protein G purified
Isotype	IgG
Clonality	Polyclonal
Alias	MKL/myocardin-like protein 1 (Megakaryoblastic leukemia 1 protein) (Megakaryocytic acute leukemia protein) (Myocardin-related transcription factor A) (MRTF-A), MKL1, KIAA1438 MAL
Immunogen Species	Homo sapiens (Human)
Research Area	Signal Transduction
Target Names	MKL1

Image



Immunofluorescence staining of HeLa cells with CSB-PA853375LA01HU at 1:133, counter-stained with DAPI. The cells were fixed in 4% formaldehyde, permeabilized using 0.2% Triton X-100 and blocked in 10% normal Goat Serum. The cells were then incubated with the antibody overnight at 4°C. The secondary antibody was Alexa Fluor 488-conjugated AffiniPure Goat Anti-Rabbit IgG(H+L).

Usage

For Research Use Only. Not for use in diagnostic or therapeutic procedures.