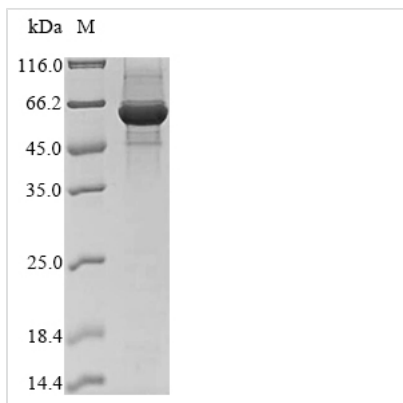




Recombinant Bovine Ferrochelatase, mitochondrial (FECH)

Product Code	CSB-EP008579BO
Abbreviation	Recombinant Bovine FECH protein
Storage	The shelf life is related to many factors, storage state, buffer ingredients, storage temperature and the stability of the protein itself. Generally, the shelf life of liquid form is 6 months at -20°C/-80°C. The shelf life of lyophilized form is 12 months at -20°C/-80°C.
Uniprot No.	P22600
Storage Buffer	Tris-based buffer,50% glycerol
Product Type	Recombinant Proteins
Immunogen Species	Bos taurus (Bovine)
Purity	≥ 85% as determined by SDS-PAGE.
Sequence	SPKPQAQPGNRKPRTGILMLNMGGPETVEEVQDFLQRLFLDQDLMTLPVQDK LGPFIAKRRTPKIQEQYRRIGGGSPIKMWTSKQGEQGMVKLLDELSPTAPHKY YIGFRYVHPLTEEAIEEMERDGLERAVAFQYYPQYSCSTTGSSLNAIYRYNEV GRKPTMKWSTIDRWPTHPLLIQCFADHILKELDHFPPEKRREVILFSAHSLPM SVVNRGDPYPQEVGATVQRVMDKLGYSNPYRLVWQSKVGPMPWLGPQTDE AIKGLCKRGRKNILLVPIAFTSDHIETLYELDIEYSQVLASECGLENIRRAESLNG NPLFSKALADLVHSHLQSKERCSTQLTLSCPLCVNPTCRETKSFFTSQQL
Research Area	Cardiovascular
Source	E.coli
Target Names	FECH
Protein Names	Recommended name: Ferrochelatase, mitochondrial EC= 4.99.1.1 Alternative name(s): Heme synthase Protoheme ferro-lyase
Expression Region	48-416aa
Notes	Repeated freezing and thawing is not recommended. Store working aliquots at 4°C for up to one week.
Tag Info	N-terminal 10xHis-SUMO-tagged and C-terminal Myc-taggedd
Mol. Weight	58.1 kDa
Protein Length	Full Length of Mature Protein
Image	



(Tris-Glycine gel) Discontinuous SDS-PAGE (reduced) with 5% enrichment gel and 15% separation gel.

Shelf Life

The shelf life is related to many factors, storage state, buffer ingredients, storage temperature and the stability of the protein itself.

Generally, the shelf life of liquid form is 6 months at -20°C/-80°C. The shelf life of lyophilized form is 12 months at -20°C/-80°C.