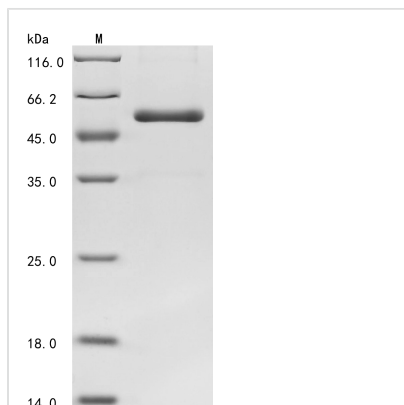




Recombinant Human Lysyl oxidase homolog 1 (LOXL1), partial

Product Code	CSB-EP013040HUb0
Abbreviation	Recombinant Human LOXL1 protein, partial
Storage	The shelf life is related to many factors, storage state, buffer ingredients, storage temperature and the stability of the protein itself. Generally, the shelf life of liquid form is 6 months at -20°C/-80°C. The shelf life of lyophilized form is 12 months at -20°C/-80°C.
Uniprot No.	Q08397
Storage Buffer	Tris-based buffer,50% glycerol
Product Type	Recombinant Proteins
Immunogen Species	Homo sapiens (Human)
Purity	≥ 85% as determined by SDS-PAGE.
Sequence	VGS DTV R G Q A R H P F G F G Q V P D N W R E V A V G D S T G M A R A R T S V S Q Q R H G G S A S S V S A S A F A S T Y R Q Q P S Y P Q Q F P Y P Q A P F V S Q Y E N Y D P A S R T Y D Q G F V Y Y R P A G G G V G A G A A A V A S A G V I Y P Y Q P R A R Y E E Y G G G E E L P E Y P P Q G F Y P A P E R P Y V P P P P P P D G L D R R Y S H S L Y S E G T P G F E Q A Y P D P G P E A A Q A H G G D P R L G W Y P P Y A N P P P E A Y G P P R A L E P P Y L P V R S S D T P P P G G E R N G A Q Q G R L S V G S V Y R P N Q N G R G L P D L V P D P N Y V Q A S T Y V Q R A H L Y S L R C A A E E K C L A S T A Y A P E A T D Y D V R V L L R F P Q R V K N Q G T A D F L P N R P R H T W E W H S C H Q H Y H S M D E F S H Y D L L D A A T G K K V A E G H K A S F C L E D S T C D F G N L K R Y A C T S H T Q G L S P G C Y D T Y N A D I D C Q W I D I T D V Q P G N Y I L K V H V N P K Y I V L E S D F T N N V V R C N I H Y T G R Y V S A T N C K I V Q S
Research Area	Cell Biology
Source	E.coli
Target Names	LOXL1
Expression Region	106-574aa
Notes	Repeated freezing and thawing is not recommended. Store working aliquots at 4°C for up to one week.
Tag Info	N-terminal 10xHis-tagged
Mol. Weight	55.4 kDa
Protein Length	Partial

Image



(Tris-Glycine gel) Discontinuous SDS-PAGE (reduced) with 5% enrichment gel and 15% separation gel.

Shelf Life

The shelf life is related to many factors, storage state, buffer ingredients, storage temperature and the stability of the protein itself.

Generally, the shelf life of liquid form is 6 months at -20°C/-80°C. The shelf life of lyophilized form is 12 months at -20°C/-80°C.