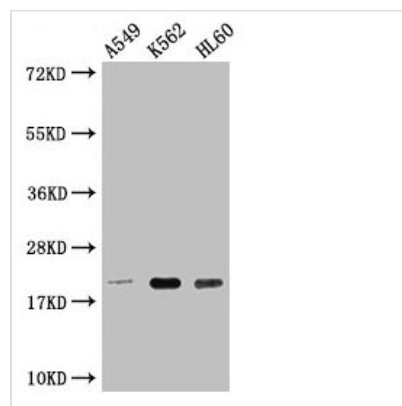




# POLR2G Antibody

<b>Product Code</b>	CSB-PA018334LA01HU
<b>Storage</b>	Upon receipt, store at -20°C or -80°C. Avoid repeated freeze.
<b>Uniprot No.</b>	P62487
<b>Immunogen</b>	Recombinant Human DNA-directed RNA polymerase II subunit RPB7 protein (1-172AA)
<b>Raised In</b>	Rabbit
<b>Species Reactivity</b>	Human
<b>Tested Applications</b>	ELISA, WB; Recommended dilution: WB:1:1000-1:5000
<b>Form</b>	Liquid
<b>Conjugate</b>	Non-conjugated
<b>Storage Buffer</b>	Preservative: 0.03% Proclin 300 Constituents: 50% Glycerol, 0.01M PBS, pH 7.4
<b>Purification Method</b>	>95%, Protein G purified
<b>Isotype</b>	IgG
<b>Clonality</b>	Polyclonal
<b>Alias</b>	DNA-directed RNA polymerase II subunit RPB7 (RNA polymerase II subunit B7) (DNA-directed RNA polymerase II subunit G) (RNA polymerase II 19 kDa subunit) (RPB19), POLR2G, RPB7
<b>Immunogen Species</b>	Homo sapiens (Human)
<b>Research Area</b>	Epigenetics and Nuclear Signaling
<b>Target Names</b>	POLR2G

## Image



### Western Blot

Positive WB detected in: A549 whole cell lysate, K562 whole cell lysate, HL60 whole cell lysate

All lanes: POLR2G antibody at 1:2000

Secondary

Goat polyclonal to rabbit IgG at 1/50000 dilution

Predicted band size: 20 kDa

Observed band size: 20 kDa

## Usage

For Research Use Only. Not for use in diagnostic or therapeutic procedures.