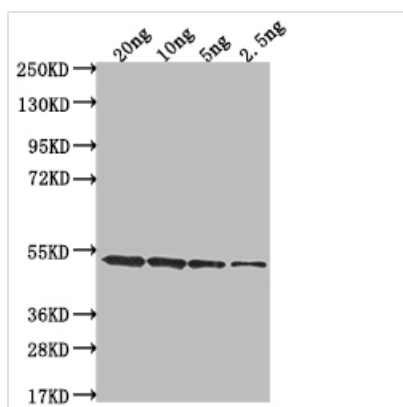




# clfA Antibody

<b>Product Code</b>	CSB-PA692021ZA01FLB
<b>Storage</b>	Upon receipt, store at -20°C or -80°C. Avoid repeated freeze.
<b>Uniprot No.</b>	Q5HHM8
<b>Immunogen</b>	Recombinant Staphylococcus aureus Clumping factor A (clfA), partial (229-559aa)
<b>Species Reactivity</b>	Staphylococcus aureus
<b>Tested Applications</b>	ELISA, WB
<b>Form</b>	Liquid
<b>Conjugate</b>	Non-conjugated
<b>Storage Buffer</b>	Preservative: 0.03% Proclin 300 Constituents: 50% Glycerol, 0.01M PBS, pH 7.4
<b>Purification Method</b>	Protein G
<b>Isotype</b>	IgG
<b>Clonality</b>	Polyclonal
<b>Product Type</b>	Polyclonal Antibody
<b>Immunogen Species</b>	Staphylococcus aureus
<b>Target Names</b>	clfA

## Image



### Western Blot

Positive WB detected in Recombinant protein

All lanes: clfA antibody at 1:2000

Secondary

Goat polyclonal to rabbit IgG at 1/50000 dilution

Predicted band size: 52 kDa

Observed band size: 52 kDa

## Usage

For Research Use Only. Not for use in diagnostic or therapeutic procedures.