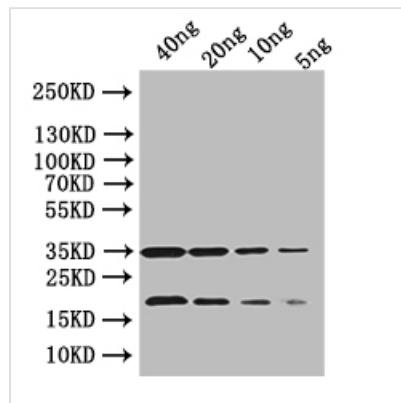




# bamA Antibody

<b>Product Code</b>	CSB-PA473705ZA01KBH
<b>Storage</b>	Upon receipt, store at -20°C or -80°C. Avoid repeated freeze.
<b>Uniprot No.</b>	B5Y1J4
<b>Immunogen</b>	Recombinant Klebsiella pneumoniae bamA protein (24-172aa)
<b>Raised In</b>	Rabbit
<b>Species Reactivity</b>	Klebsiella pneumoniae
<b>Tested Applications</b>	ELISA, WB; Recommended dilution: WB:1:500-1:5000
<b>Form</b>	Liquid
<b>Conjugate</b>	Non-conjugated
<b>Storage Buffer</b>	Preservative: 0.03% Proclin 300 Constituents: 50% Glycerol, 0.01M PBS, pH 7.4
<b>Purification Method</b>	>95%, Protein G purified
<b>Isotype</b>	IgG
<b>Clonality</b>	Polyclonal
<b>Product Type</b>	Polyclonal Antibody
<b>Immunogen Species</b>	Klebsiella pneumoniae (strain 342)
<b>Target Names</b>	bamA

## Image



### Western Blot

Positive WB detected in: recombinant protein

All lanes:bamA Antibody at 1:1000

Secondary

Goat polyclonal to rabbit IgG at 1/20000 dilution

Predicted band size: 34.5 kDa

Observed band size: 34 kDa

## Usage

For Research Use Only. Not for use in diagnostic or therapeutic procedures.