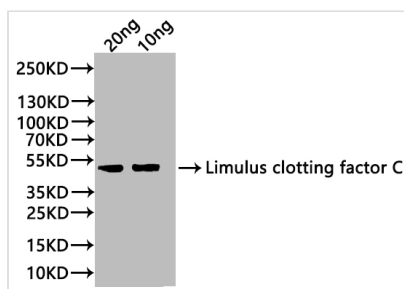




# Limulus clotting factor C Antibody

<b>Product Code</b>	CSB-PA638870ZA01CDQ
<b>Storage</b>	Upon receipt, store at -20°C or -80°C. Avoid repeated freeze.
<b>Uniprot No.</b>	Q26422
<b>Immunogen</b>	Recombinant Carinoscorpis rotundicauda Limulus clotting factor C protein (691-1019aa)
<b>Raised In</b>	Rabbit
<b>Species Reactivity</b>	Carcinoscorpis rotundicauda
<b>Tested Applications</b>	ELISA, WB; Recommended dilution: WB:1:500-1:5000
<b>Form</b>	Liquid
<b>Conjugate</b>	Non-conjugated
<b>Storage Buffer</b>	Preservative: 0.03% Proclin 300 Constituents: 50% Glycerol, 0.01M PBS, pH 7.4
<b>Purification Method</b>	Antigen Affinity Purified
<b>Isotype</b>	IgG
<b>Clonality</b>	Polyclonal
<b>Product Type</b>	Polyclonal Antibody
<b>Immunogen Species</b>	Carcinoscorpis rotundicauda (Mangrove horseshoe crab) (Limulus rotundicauda)
<b>Target Names</b>	Limulus clotting factor C

## Image



### Western Blot

Positive WB detected in: recombinant protein  
All lanes: Limulus clotting factor C Antibody at 1:1000

### Secondary

Goat polyclonal to rabbit IgG at 1/20000 dilution  
Predicted band size: 43 kDa  
Observed band size: 43 kDa

## Usage

For Research Use Only. Not for use in diagnostic or therapeutic procedures.