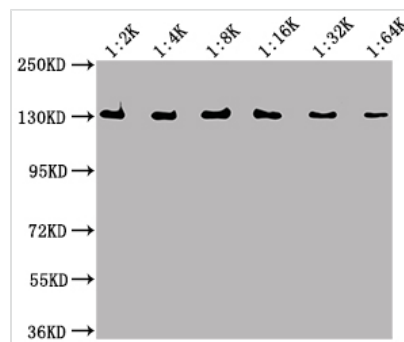




lacZ Monoclonal Antibody

| | |
|----------------------------|---|
| Product Code | CSB-MA009476A0m |
| Storage | Upon receipt, store at -20°C or -80°C. Avoid repeated freeze. |
| Uniprot No. | P00722 |
| Immunogen | Recombinant Escherichia coli Beta-galactosidase protein (2-1024AA) |
| Raised In | Mouse |
| Species Reactivity | Escherichia coli |
| Tested Applications | ELISA, WB, IF, IP, FC; Recommended dilution: WB:1:1000-1:64000, IF:1:50-1:200, IP:1ul-4ul, FC:1:100-1:300 |
| Relevance | Hydrolysis of terminal non-reducing beta-D-galactose residues in beta-D-galactosides. |
| Form | Liquid |
| Conjugate | Non-conjugated |
| Storage Buffer | Preservative: 0.03% Proclin 300 Constituents: 50% Glycerol, 0.01M PBS, PH 7.4 |
| Purification Method | >95%, Protein G purified |
| Isotype | IgG1 |
| Clonality | Monoclonal |
| Product Type | Monoclonal Antibody |
| Immunogen Species | Escherichia coli |
| Gene Names | lacZ |
| Clone No. | 3B7D5 |

Image

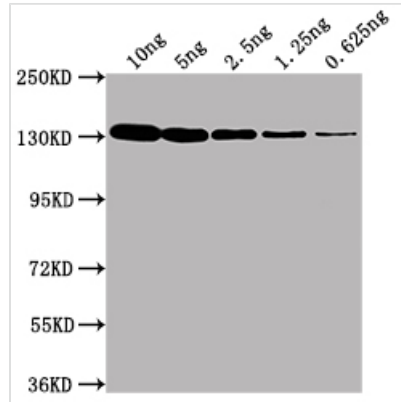


Western Blot

Positive WB detected in Recombinant protein
All lanes: lacZ antibody at 1:2000, 1:4000, 1:8000, 1:16000, 1:32000, 1:64000

Secondary

Goat polyclonal to Mouse IgG at 1/50000 dilution
Predicted band size: 117 kDa
Observed band size: 130 kDa



Western Blot

Positive WB detected in Recombinant protein (10ng, 5ng, 2.5ng, 1.25ng, 0.625ng)

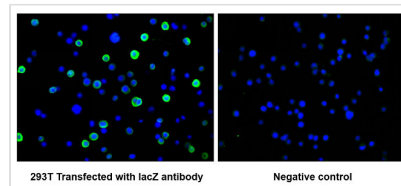
All lanes: lacZ antibody at 1:2000

Secondary

Goat polyclonal to Mouse IgG at 1/50000 dilution

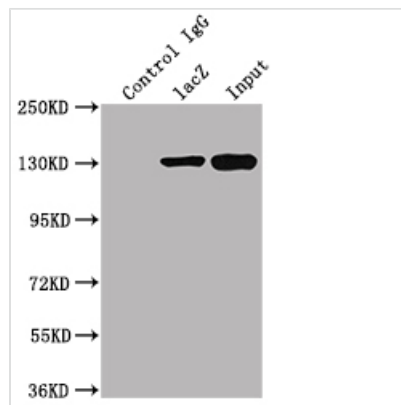
Predicted band size: 117 kDa

Observed band size: 130 kDa



Immunofluorescence staining of 293T cells

transfected with CSB-MA009476A0m at 1:100, counter-stained with DAPI. The cells were fixed in 4% formaldehyde and blocked in 10% normal Goat Serum. The cells were then incubated with the antibody overnight at 4°C. The secondary antibody was Alexa Fluor 488-conjugated AffiniPure Goat Anti-Rabbit IgG(H+L). The image on the right is the 293T cells transfected without lacZ antibody



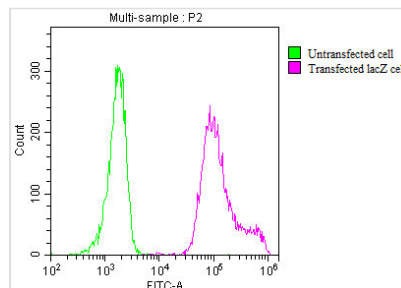
Immunoprecipitating lacZ in 293T transfected whole cell lysate

Lane 1: Mouse control IgG instead of CSB-MA009476A0m in 293T transfected whole cell lysate

Lane 2: CSB-MA009476A0m (2µl) + 293T transfected whole cell lysate (500µg)

Lane 3: 293T transfected whole cell lysate (20µg)

For western blotting, the blot was detected with CSB-MA000021M0m at 1:2000, and a HRP-conjugated Protein G antibody was used as the secondary antibody at 1:2000



Overlay histogram showing 293T transfected cells (red line) or untransfected cells (green line)

stained with CSB-MA009476A0m at 1:200. The cells were incubated in 1x PBS /10% normal goat serum to block non-specific protein-protein interactions followed by primary antibody for 1 h at 4°C. The secondary antibody used was FITC goat anti-mouse IgG(H+L) at 1/200 dilution for 1 h at 4°C.