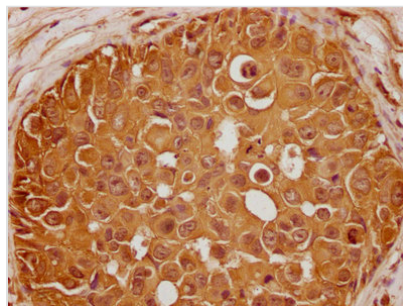




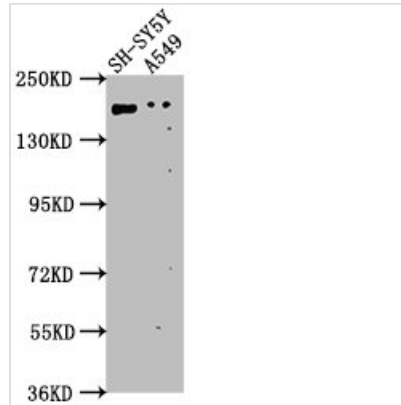
GLI2 Antibody

Product Code	CSB-PA009500OA01HU
Storage	Upon receipt, store at -20°C or -80°C. Avoid repeated freeze.
Uniprot No.	P10070
Immunogen	Peptide sequence from Human Zinc finger protein GLI2 protein (2-20AA)
Raised In	Rabbit
Species Reactivity	Human
Tested Applications	ELISA, WB, IHC; Recommended dilution: WB:1:500-1:2000, IHC:1:20-1:200
Form	Liquid
Conjugate	Non-conjugated
Storage Buffer	Preservative: 0.03% Proclin 300 Constituents: 50% Glycerol, 0.01M PBS, pH 7.4
Purification Method	Antigen Affinity Purified
Isotype	IgG
Clonality	Polyclonal
Alias	Zinc finger protein GLI2 (GLI family zinc finger protein 2) (Tax helper protein), GLI2, THP
Immunogen Species	Homo sapiens (Human)
Research Area	Epigenetics and Nuclear Signaling
Target Names	GLI2

Image



IHC image of CSB-PA009500OA01HU diluted at 1:100 and staining in paraffin-embedded human breast cancer performed on a Leica BondTM system. After dewaxing and hydration, antigen retrieval was mediated by high pressure in a citrate buffer (pH 6.0). Section was blocked with 10% normal goat serum 30min at RT. Then primary antibody (1% BSA) was incubated at 4°C overnight. The primary is detected by a biotinylated secondary antibody and visualized using an HRP conjugated SP system.

**Western Blot**

Positive WB detected in: SH-SY5Y whole cell lysate, A549 whole cell lysate

All lanes: GLI2 antibody at 1:1000

Secondary

Goat polyclonal to rabbit IgG at 1/50000 dilution

Predicted band size: 168, 134, 132, 89, 87 kDa

Observed band size: 168 kDa

Usage

For Research Use Only. Not for use in diagnostic or therapeutic procedures.