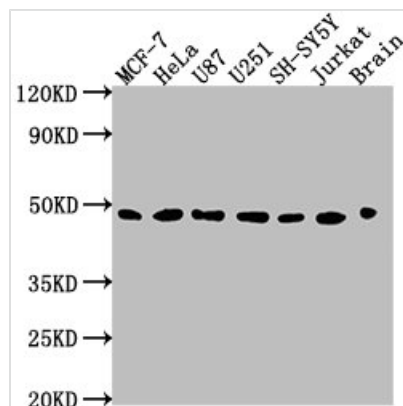




LOX Antibody

Product Code	CSB-PA013038LA01HU
Storage	Upon receipt, store at -20°C or -80°C. Avoid repeated freeze.
Uniprot No.	P28300
Immunogen	Recombinant Human Protein-lysine 6-oxidase protein (23-285AA)
Raised In	Rabbit
Species Reactivity	Human, Rat
Tested Applications	ELISA, WB, IHC; Recommended dilution: WB:1:1000-1:5000, IHC:1:200-1:500
Form	Liquid
Conjugate	Non-conjugated
Storage Buffer	Preservative: 0.03% Proclin 300 Constituents: 50% Glycerol, 0.01M PBS, pH 7.4
Purification Method	>95%, Protein G purified
Isotype	IgG
Clonality	Polyclonal
Alias	Protein-lysine 6-oxidase (EC 1.4.3.13) (Lysyl oxidase), LOX
Immunogen Species	Homo sapiens (Human)
Research Area	Signal Transduction
Target Names	LOX

Image



Western Blot

Positive WB detected in: MCF-7 whole cell lysate, HeLa whole cell lysate, U87 whole cell lysate, U251 whole cell lysate, SH-SY5Y whole cell lysate, Jurkat whole cell lysate, Rat brain tissue

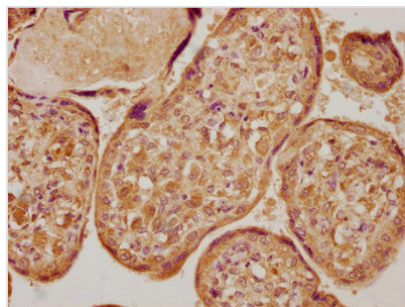
All lanes: LOX antibody at 1:2000

Secondary

Goat polyclonal to rabbit IgG at 1/50000 dilution

Predicted band size: 47 kDa

Observed band size: 47 kDa



IHC image of CSB-PA013038LA01HU diluted at 1:400 and staining in paraffin-embedded human placenta tissue performed on a Leica Bond™ system. After dewaxing and hydration, antigen retrieval was mediated by high pressure in a citrate buffer (pH 6.0). Section was blocked with 10% normal goat serum 30min at RT. Then primary antibody (1% BSA) was incubated at 4°C overnight. The primary is detected by a biotinylated secondary antibody and visualized using an HRP conjugated SP system.

Usage

For Research Use Only. Not for use in diagnostic or therapeutic procedures.