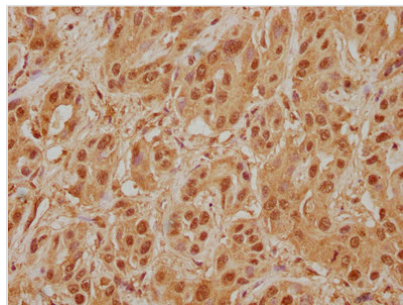




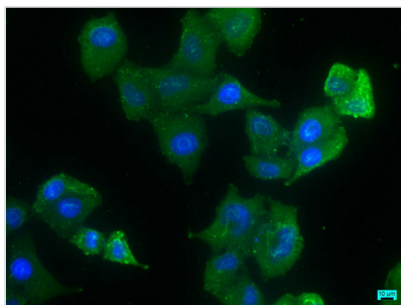
LRP1 Antibody

Product Code	CSB-PA013091NA01HU
Storage	Upon receipt, store at -20°C or -80°C. Avoid repeated freeze.
Uniprot No.	Q07954
Immunogen	Peptide sequence from Human Prolow-density lipoprotein receptor-related protein 1 protein (3924-3942AA)
Raised In	Rabbit
Species Reactivity	Human
Tested Applications	ELISA, IHC, IF; Recommended dilution: IHC:1:200-1:500, IF:1:50-1:200
Form	Liquid
Conjugate	Non-conjugated
Storage Buffer	Preservative: 0.03% Proclin 300 Constituents: 50% Glycerol, 0.01M PBS, pH 7.4
Purification Method	>95%, Protein G purified
Isotype	IgG
Clonality	Polyclonal
Alias	Prolow-density lipoprotein receptor-related protein 1 (LRP-1) (Alpha-2-macroglobulin receptor) (A2MR) (Apolipoprotein E receptor) (APOER) (CD antigen CD91) [Cleaved into: Low-density lipoprotein receptor-related protein 1 85 kDa subunit (LRP-85); Low-density lipoprotein receptor-related protein 1 515 kDa subunit (LRP-515); Low-density lipoprotein receptor-related protein 1 intracellular domain (LRPICD)], LRP1, A2MR APR
Immunogen Species	Homo sapiens (Human)
Research Area	Neuroscience
Target Names	LRP1

Image



IHC image of CSB-PA013091NA01HU diluted at 1:400 and staining in paraffin-embedded human liver cancer performed on a Leica BondTM system. After dewaxing and hydration, antigen retrieval was mediated by high pressure in a citrate buffer (pH 6.0). Section was blocked with 10% normal goat serum 30min at RT. Then primary antibody (1% BSA) was incubated at 4°C overnight. The primary is detected by a biotinylated secondary antibody and visualized using an HRP conjugated SP system.



Immunofluorescence staining of HeLa cells with CSB-PA013091NA01HU at 1:133, counter-stained with DAPI. The cells were fixed in 4% formaldehyde, permeabilized using 0.2% Triton X-100 and blocked in 10% normal Goat Serum. The cells were then incubated with the antibody overnight at 4°C. The secondary antibody was Alexa Fluor 488-conjugated AffiniPure Goat Anti-Rabbit IgG(H+L).