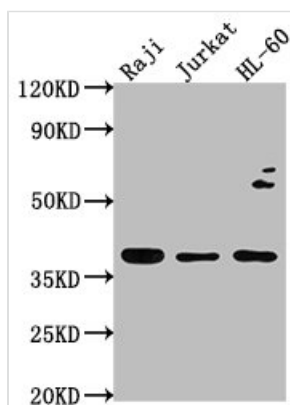




# RASSF2 Antibody

<b>Product Code</b>	CSB-PA019374LA01HU
<b>Storage</b>	Upon receipt, store at -20°C or -80°C. Avoid repeated freeze.
<b>Uniprot No.</b>	P50749
<b>Immunogen</b>	Recombinant Human Ras association domain-containing protein 2 protein (69-326AA)
<b>Raised In</b>	Rabbit
<b>Species Reactivity</b>	Human
<b>Tested Applications</b>	ELISA, WB, IP; Recommended dilution: WB:1:1000-1:5000, IP:1:200-1:2000
<b>Form</b>	Liquid
<b>Conjugate</b>	Non-conjugated
<b>Storage Buffer</b>	Preservative: 0.03% Proclin 300 Constituents: 50% Glycerol, 0.01M PBS, pH 7.4
<b>Purification Method</b>	>95%, Protein G purified
<b>Isotype</b>	IgG
<b>Clonality</b>	Polyclonal
<b>Alias</b>	Ras association domain-containing protein 2, RASSF2, CENP-34 KIAA0168
<b>Immunogen Species</b>	Homo sapiens (Human)
<b>Research Area</b>	Signal Transduction
<b>Target Names</b>	RASSF2

## Image



### Western Blot

Positive WB detected in: Raji whole cell lysate, Jurkat whole cell lysate, HL-60 whole cell lysate

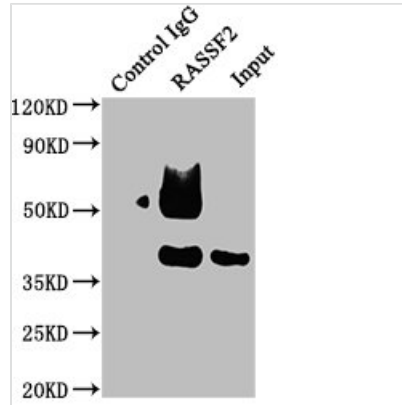
All lanes: RASSF2 antibody at 1:2000

Secondary

Goat polyclonal to rabbit IgG at 1/50000 dilution

Predicted band size: 38, 18 kDa

Observed band size: 38 kDa



Immunoprecipitating RASSF2 in Raji whole cell lysate

Lane 1: Rabbit control IgG instead of CSB-PA019374LA01HU in Raji whole cell lysate. For western blotting, a HRP-conjugated Protein G antibody was used as the secondary antibody (1/50000)

Lane 2: CSB-PA019374LA01HU (5ug) + Raji whole cell lysate (0.5mg)

Lane 3: Raji whole cell lysate (20ug)

## Usage

For Research Use Only. Not for use in diagnostic or therapeutic procedures.