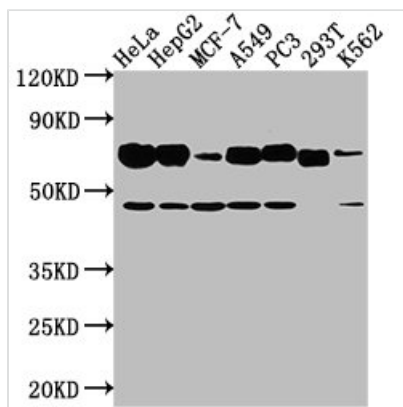




SLC3A2 Antibody

Product Code	CSB-PA021640LA01HU
Storage	Upon receipt, store at -20°C or -80°C. Avoid repeated freeze.
Uniprot No.	P08195
Immunogen	Recombinant Human 4F2 cell-surface antigen heavy chain protein (404-630AA)
Raised In	Rabbit
Species Reactivity	Human
Tested Applications	ELISA, WB; Recommended dilution: WB:1:1000-1:5000
Form	Liquid
Conjugate	Non-conjugated
Storage Buffer	Preservative: 0.03% Proclin 300 Constituents: 50% Glycerol, 0.01M PBS, pH 7.4
Purification Method	>95%, Protein G purified
Isotype	IgG
Clonality	Polyclonal
Alias	4F2 cell-surface antigen heavy chain (4F2hc) (4F2 heavy chain antigen) (Lymphocyte activation antigen 4F2 large subunit) (Solute carrier family 3 member 2) (CD antigen CD98), SLC3A2, MDU1
Immunogen Species	Homo sapiens (Human)
Research Area	Immunology
Target Names	SLC3A2

Image



Western Blot

Positive WB detected in: HeLa whole cell lysate, HepG2 whole cell lysate, MCF-7 whole cell lysate, A549 whole cell lysate, PC3 whole cell lysate, 293T whole cell lysate, K562 whole cell lysate

All lanes: SLC3A2 antibody at 1:2000

Secondary

Goat polyclonal to rabbit IgG at 1/50000 dilution

Predicted band size: 68, 58, 62, 72 kDa

Observed band size: 68 kDa

Usage

For Research Use Only. Not for use in diagnostic or therapeutic procedures.