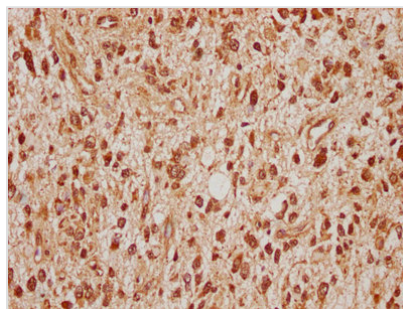




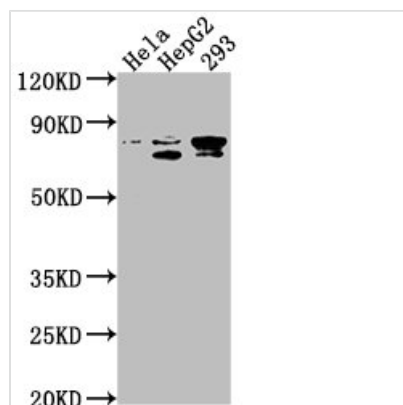
# SRPK2 Antibody

<b>Product Code</b>	CSB-PA022683LA01HU
<b>Storage</b>	Upon receipt, store at -20°C or -80°C. Avoid repeated freeze.
<b>Uniprot No.</b>	P78362
<b>Immunogen</b>	Recombinant Human SRSF protein kinase 2 protein (471-688AA)
<b>Raised In</b>	Rabbit
<b>Species Reactivity</b>	Human
<b>Tested Applications</b>	ELISA, WB, IHC; Recommended dilution: WB:1:500-1:2000, IHC:1:20-1:200
<b>Form</b>	Liquid
<b>Conjugate</b>	Non-conjugated
<b>Storage Buffer</b>	Preservative: 0.03% Proclin 300 Constituents: 50% Glycerol, 0.01M PBS, pH 7.4
<b>Purification Method</b>	Antigen Affinity Purified
<b>Isotype</b>	IgG
<b>Clonality</b>	Polyclonal
<b>Alias</b>	SRSF protein kinase 2 (EC 2.7.11.1) (SFRS protein kinase 2) (Serine/arginine-rich protein-specific kinase 2) (SR-protein-specific kinase 2) [Cleaved into: SRSF protein kinase 2 N-terminal; SRSF protein kinase 2 C-terminal], SRPK2
<b>Immunogen Species</b>	Homo sapiens (Human)
<b>Research Area</b>	Cell Biology
<b>Target Names</b>	SRPK2

## Image



IHC image of CSB-PA022683LA01HU diluted at 1:100 and staining in paraffin-embedded human glioma cancer performed on a Leica Bond<sup>TM</sup> system. After dewaxing and hydration, antigen retrieval was mediated by high pressure in a citrate buffer (pH 6.0). Section was blocked with 10% normal goat serum 30min at RT. Then primary antibody (1% BSA) was incubated at 4°C overnight. The primary is detected by a biotinylated secondary antibody and visualized using an HRP conjugated SP system.



#### Western Blot

Positive WB detected in: HeLa whole cell lysate,  
HepG2 whole cell lysate, 293 whole cell lysate

All lanes: SRPK2 antibody at 1:1000

Secondary

Goat polyclonal to rabbit IgG at 1/50000 dilution

Predicted band size: 78, 80 kDa

Observed band size: 78 kDa