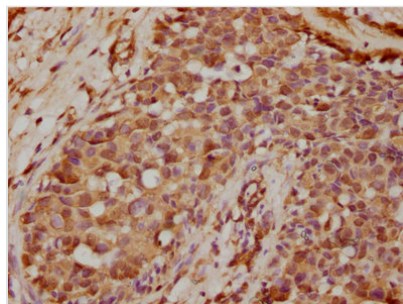




# AGR2 Antibody

|                            |  |
|----------------------------|--|
| <b>Product Code</b>        | CSB-PA13057A0Rb  |
| <b>Storage</b>             | Upon receipt, store at -20°C or -80°C. Avoid repeated freeze.  |
| <b>Uniprot No.</b>         | O95994   |
| <b>Immunogen</b>           | Recombinant Human Anterior gradient protein 2 homolog protein (21-175AA)   |
| <b>Raised In</b>           | Rabbit   |
| <b>Species Reactivity</b>  | Human  |
| <b>Tested Applications</b> | ELISA, IHC; Recommended dilution: IHC:1:200-1:500  |
| <b>Form</b>                | Liquid   |
| <b>Conjugate</b>           | Non-conjugated   |
| <b>Storage Buffer</b>      | Preservative: 0.03% Proclin 300<br>Constituents: 50% Glycerol, 0.01M PBS, pH 7.4                                   |
| <b>Purification Method</b> | >95%, Protein G purified   |
| <b>Isotype</b>             | IgG  |
| <b>Clonality</b>           | Polyclonal   |
| <b>Alias</b>               | Anterior gradient protein 2 homolog (AG-2) (hAG-2) (HPC8) (Secreted cement gland protein XAG-2 homolog), AGR2, AG2 |
| <b>Immunogen Species</b>   | Homo sapiens (Human)   |
| <b>Research Area</b>       | Stem Cells   |
| <b>Target Names</b>        | AGR2   |

## Image



IHC image of CSB-PA13057A0Rb diluted at 1:400 and staining in paraffin-embedded human breast cancer performed on a Leica Bond™ system. After dewaxing and hydration, antigen retrieval was mediated by high pressure in a citrate buffer (pH 6.0). Section was blocked with 10% normal goat serum 30min at RT. Then primary antibody (1% BSA) was incubated at 4°C overnight. The primary is detected by a biotinylated secondary antibody and visualized using an HRP conjugated SP system.

## Usage

For Research Use Only. Not for use in diagnostic or therapeutic procedures.