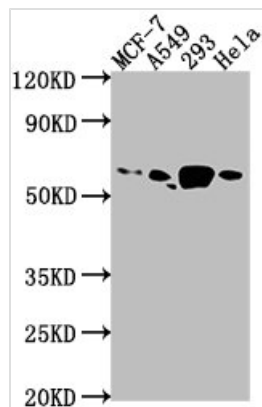




PDE1B Antibody

Product Code	CSB-PA27759A0Rb
Storage	Upon receipt, store at -20°C or -80°C. Avoid repeated freeze.
Uniprot No.	Q01064
Immunogen	Recombinant Human Calcium/calmodulin-dependent 3',5'-cyclic nucleotide phosphodiesterase 1B protein (1-277AA)
Raised In	Rabbit
Species Reactivity	Human
Tested Applications	ELISA, WB, IF; Recommended dilution: WB:1:500-1:2000, IF:1:50-1:200
Form	Liquid
Conjugate	Non-conjugated
Storage Buffer	Preservative: 0.03% Proclin 300 Constituents: 50% Glycerol, 0.01M PBS, pH 7.4
Purification Method	Antigen Affinity Purified
Isotype	IgG
Clonality	Polyclonal
Alias	Calcium/calmodulin-dependent 3',5'-cyclic nucleotide phosphodiesterase 1B (Cam-PDE 1B) (EC 3.1.4.17) (63 kDa Cam-PDE), PDE1B, PDE1B1 PDES1B
Immunogen Species	Homo sapiens (Human)
Research Area	Signal Transduction
Target Names	PDE1B

Image



Western Blot

Positive WB detected in: MCF-7 whole cell lysate, A549 whole cell lysate, 293 whole cell lysate, HeLa whole cell lysate

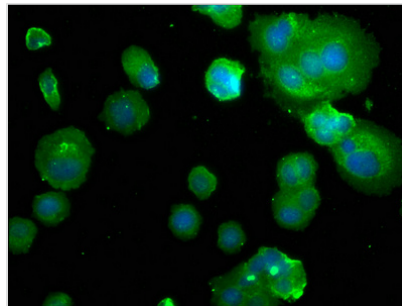
All lanes: PDE1B antibody at 1:1000

Secondary

Goat polyclonal to rabbit IgG at 1/50000 dilution

Predicted band size: 62, 60 kDa

Observed band size: 62 kDa



Immunofluorescence staining of MCF-7 with CSB-PA27759A0Rb at 1:50, counter-stained with DAPI. The cells were fixed in 4% formaldehyde, permeabilized using 0.2% Triton X-100 and blocked in 10% normal Goat Serum. The cells were then incubated with the antibody overnight at 4°C. The secondary antibody was Alexa Fluor 488-conjugated AffiniPure Goat Anti-Rabbit IgG(H+L).