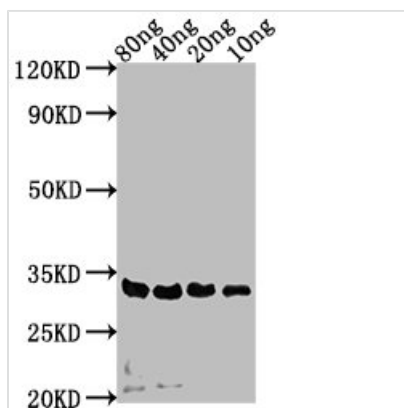




# sdeA Antibody

<b>Product Code</b>	CSB-PA28219A0Rb
<b>Storage</b>	Upon receipt, store at -20°C or -80°C. Avoid repeated freeze.
<b>Uniprot No.</b>	Q5ZTK4
<b>Immunogen</b>	Recombinant Legionella pneumophila subsp Ubiquitinating/deubiquitinating enzyme SdeA protein (19-268AA)
<b>Raised In</b>	Rabbit
<b>Species Reactivity</b>	Legionella pneumophila subsp
<b>Tested Applications</b>	ELISA, WB; Recommended dilution: WB:1:1000-1:5000
<b>Form</b>	Liquid
<b>Conjugate</b>	Non-conjugated
<b>Storage Buffer</b>	Preservative: 0.03% Proclin 300 Constituents: 50% Glycerol, 0.01M PBS, pH 7.4
<b>Purification Method</b>	>95%, Protein G purified
<b>Isotype</b>	IgG
<b>Clonality</b>	Polyclonal
<b>Alias</b>	Ubiquitinating/deubiquitinating enzyme SdeA (Effector protein SdeA) [Includes: Deubiquitinase (DUB) (EC 3.4.22.-) (Deneddylase) (Deubiquitinating enzyme); Ubiquitin transferase (EC 2.3.2.-); Mono-ADP-ribosyltransferase (mART) (EC 2.4.2.31)], sdeA
<b>Immunogen Species</b>	Legionella pneumophila subsp. pneumophila (strain Philadelphia 1 / ATCC 33152 / DSM 7513)
<b>Research Area</b>	Others
<b>Target Names</b>	sdeA

## Image



### Western Blot

Positive WB detected in Recombinant protein

All lanes: sdeA antibody at 1:2000

Secondary

Goat polyclonal to rabbit IgG at 1/50000 dilution

Predicted band size: 32 kDa

Observed band size: 32 kDa

## Usage

For Research Use Only. Not for use in diagnostic or therapeutic procedures.