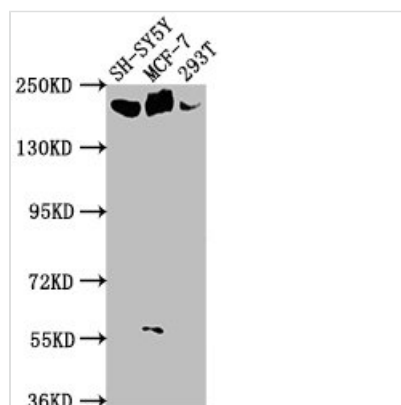




LAMA4 Antibody

Product Code	CSB-PA621948LA01HU
Storage	Upon receipt, store at -20°C or -80°C. Avoid repeated freeze.
Uniprot No.	Q16363
Immunogen	Recombinant Human Laminin subunit alpha-4 protein (1593-1823AA)
Raised In	Rabbit
Species Reactivity	Human
Tested Applications	ELISA, WB, IF; Recommended dilution: WB:1:500-1:2000, IF:1:50-1:200
Form	Liquid
Conjugate	Non-conjugated
Storage Buffer	Preservative: 0.03% Proclin 300 Constituents: 50% Glycerol, 0.01M PBS, pH 7.4
Purification Method	Antigen Affinity Purified
Isotype	IgG
Clonality	Polyclonal
Alias	Laminin subunit alpha-4 (Laminin-14 subunit alpha) (Laminin-8 subunit alpha) (Laminin-9 subunit alpha), LAMA4
Immunogen Species	Homo sapiens (Human)
Research Area	Signal Transduction
Target Names	LAMA4

Image



Western Blot

Positive WB detected in: SH-SY5Y whole cell lysate, MCF-7 whole cell lysate, 293T whole cell lysate

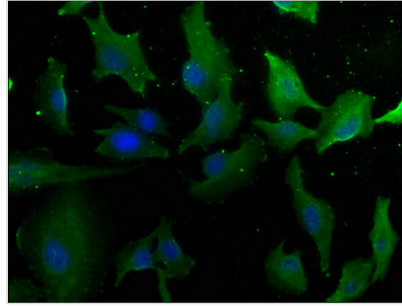
All lanes: LAMA4 antibody at 1:1000

Secondary

Goat polyclonal to rabbit IgG at 1/50000 dilution

Predicted band size: 203, 202, 13 kDa

Observed band size: 203 kDa



Immunofluorescence staining of U251 cells with CSB-PA621948LA01HU at 1:50, counter-stained with DAPI. The cells were fixed in 4% formaldehyde, permeabilized using 0.2% Triton X-100 and blocked in 10% normal Goat Serum. The cells were then incubated with the antibody overnight at 4°C. The secondary antibody was Alexa Fluor 488-conjugated AffiniPure Goat Anti-Rabbit IgG(H+L).

Usage

For Research Use Only. Not for use in diagnostic or therapeutic procedures.