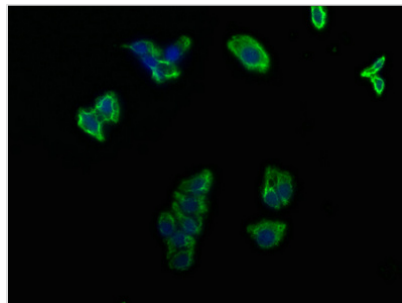




SHH Antibody

| | |
|----------------------------|---|
| Product Code | CSB-PA623000LA01HU |
| Storage | Upon receipt, store at -20°C or -80°C. Avoid repeated freeze. |
| Uniprot No. | Q15465 |
| Immunogen | Recombinant Human Sonic hedgehog protein (51-300AA) |
| Raised In | Rabbit |
| Species Reactivity | Human |
| Tested Applications | ELISA, IF; Recommended dilution: IF:1:50-1:200 |
| Form | Liquid |
| Conjugate | Non-conjugated |
| Storage Buffer | Preservative: 0.03% Proclin 300 Constituents: 50% Glycerol, 0.01M PBS, pH 7.4 |
| Purification Method | >95%, Protein G purified |
| Isotype | IgG |
| Clonality | Polyclonal |
| Alias | Sonic hedgehog protein (SHH) (HHG-1) (Shh unprocessed N-terminal signaling and C-terminal autoprocessing domains) (ShhNC) [Cleaved into: Sonic hedgehog protein N-product (ShhN) (Shh N-terminal processed signaling domains) (ShhNp)], SHH |
| Immunogen Species | Homo sapiens (Human) |
| Research Area | Epigenetics and Nuclear Signaling |
| Target Names | SHH |

Image



Immunofluorescence staining of HepG2 cells with CSB-PA623000LA01HU at 1:100, counter-stained with DAPI. The cells were fixed in 4% formaldehyde, permeabilized using 0.2% Triton X-100 and blocked in 10% normal Goat Serum. The cells were then incubated with the antibody overnight at 4°C. The secondary antibody was Alexa Fluor 488-conjugated AffiniPure Goat Anti-Rabbit IgG(H+L).

Usage

For Research Use Only. Not for use in diagnostic or therapeutic procedures.