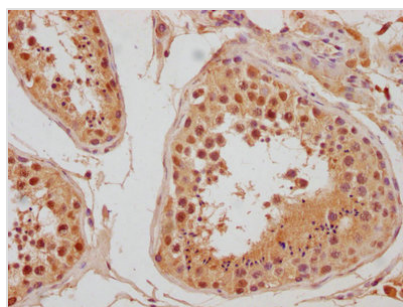




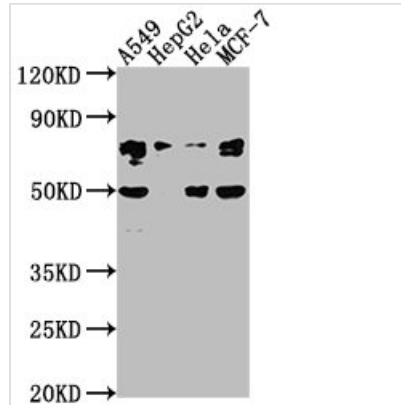
LEO1 Antibody

| | |
|----------------------------|---|
| Product Code | CSB-PA845150NA01HU |
| Storage | Upon receipt, store at -20°C or -80°C. Avoid repeated freeze. |
| Uniprot No. | Q8WVC0 |
| Immunogen | Peptide sequence from Human RNA polymerase-associated protein LEO1 protein (2-24AA) |
| Raised In | Rabbit |
| Species Reactivity | Human |
| Tested Applications | ELISA, WB, IHC; Recommended dilution: WB:1:1000-1:5000, IHC:1:200-1:500 |
| Form | Liquid |
| Conjugate | Non-conjugated |
| Storage Buffer | Preservative: 0.03% Proclin 300 Constituents: 50% Glycerol, 0.01M PBS, pH 7.4 |
| Purification Method | >95%, Protein G purified |
| Isotype | IgG |
| Clonality | Polyclonal |
| Alias | RNA polymerase-associated protein LEO1 (Replicative senescence down-regulated leo1-like protein), LEO1, RDL |
| Immunogen Species | Homo sapiens (Human) |
| Research Area | Epigenetics and Nuclear Signaling |
| Target Names | LEO1 |

Image



IHC image of CSB-PA845150NA01HU diluted at 1:300 and staining in paraffin-embedded human testis tissue performed on a Leica BondTM system. After dewaxing and hydration, antigen retrieval was mediated by high pressure in a citrate buffer (pH 6.0). Section was blocked with 10% normal goat serum 30min at RT. Then primary antibody (1% BSA) was incubated at 4°C overnight. The primary is detected by a biotinylated secondary antibody and visualized using an HRP conjugated SP system.

**Western Blot**

Positive WB detected in: A549 whole cell lysate, HepG2 whole cell lysate, HeLa whole cell lysate, MCF-7 whole cell lysate

All lanes: LEO1 antibody at 1:2000

Secondary

Goat polyclonal to rabbit IgG at 1/50000 dilution

Predicted band size: 76, 69 kDa

Observed band size: 76 kDa

Usage

For Research Use Only. Not for use in diagnostic or therapeutic procedures.