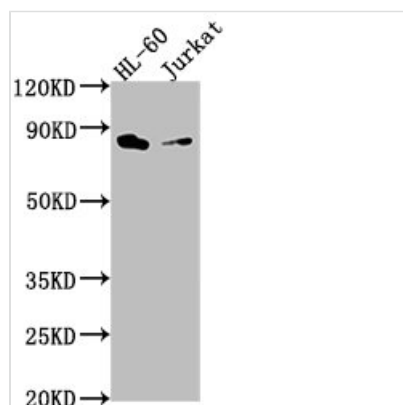




ELMO1 Antibody

Product Code	CSB-PA856404HA01HU
Storage	Upon receipt, store at -20°C or -80°C. Avoid repeated freeze.
Uniprot No.	Q92556
Immunogen	Recombinant Human Engulfment and cell motility protein 1 protein (520-727AA)
Raised In	Rabbit
Species Reactivity	Human
Tested Applications	ELISA, WB; Recommended dilution: WB:1:1000-1:5000
Form	Liquid
Conjugate	Non-conjugated
Storage Buffer	Preservative: 0.03% Proclin 300 Constituents: 50% Glycerol, 0.01M PBS, pH 7.4
Purification Method	>95%, Protein G purified
Isotype	IgG
Clonality	Polyclonal
Alias	Engulfment and cell motility protein 1 (Protein ced-12 homolog), ELMO1, KIAA0281
Immunogen Species	Homo sapiens (Human)
Research Area	Signal Transduction
Target Names	ELMO1

Image



Western Blot
 Positive WB detected in: HL-60 whole cell lysate,
 Jurkat whole cell lysate
 All lanes: ELMO1 antibody at 1:2000
 Secondary
 Goat polyclonal to rabbit IgG at 1/50000 dilution
 Predicted band size: 84, 29, 50 kDa
 Observed band size: 84 kDa

Usage

For Research Use Only. Not for use in diagnostic or therapeutic procedures.