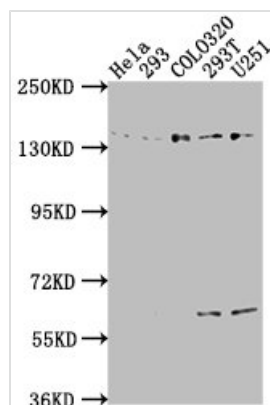




ERC1 Antibody

Product Code	CSB-PA007767LA01HU
Storage	Upon receipt, store at -20°C or -80°C. Avoid repeated freeze.
Uniprot No.	Q8IUD2
Immunogen	Recombinant Human ELKS/Rab6-interacting/CAST family member 1 protein (1-224AA)
Raised In	Rabbit
Species Reactivity	Human
Tested Applications	ELISA, WB, IF; Recommended dilution: WB:1:1000-1:5000, IF:1:50-1:200
Form	Liquid
Conjugate	Non-conjugated
Storage Buffer	Preservative: 0.03% Proclin 300 Constituents: 50% Glycerol, 0.01M PBS, pH 7.4
Purification Method	>95%, Protein G purified
Isotype	IgG
Clonality	Polyclonal
Alias	ELKS/Rab6-interacting/CAST family member 1 (ERC-1) (Rab6-interacting protein 2), ERC1, ELKS KIAA1081 RAB6IP2
Immunogen Species	Homo sapiens (Human)
Research Area	Neuroscience
Target Names	ERC1

Image



Western Blot

Positive WB detected in: HeLa whole cell lysate, 293 whole cell lysate, COLO320 whole cell lysate, 293T whole cell lysate, U251 whole cell lysate

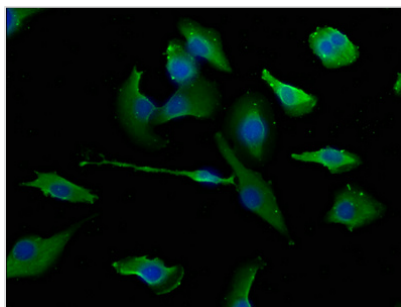
All lanes: ERC1 antibody at 1:2000

Secondary

Goat polyclonal to rabbit IgG at 1/50000 dilution

Predicted band size: 129, 114, 125, 109, 82 kDa

Observed band size: 135 kDa



Immunofluorescence staining of U251 cells with CSB-PA007767LA01HU at 1:133, counter-stained with DAPI. The cells were fixed in 4% formaldehyde, permeabilized using 0.2% Triton X-100 and blocked in 10% normal Goat Serum. The cells were then incubated with the antibody overnight at 4°C. The secondary antibody was Alexa Fluor 488-conjugated AffiniPure Goat Anti-Rabbit IgG(H+L).