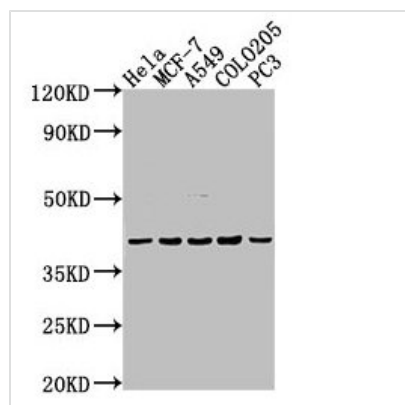




LPAR2 Antibody

Product Code	CSB-PA013048OA01HU
Storage	Upon receipt, store at -20°C or -80°C. Avoid repeated freeze.
Uniprot No.	Q9HBW0
Immunogen	Peptide sequence from Human Lysophosphatidic acid receptor 2 protein (8-27AA)
Raised In	Rabbit
Species Reactivity	Human
Tested Applications	ELISA, WB, IHC; Recommended dilution: WB:1:1000-1:5000, IHC:1:500-1:1000
Form	Liquid
Conjugate	Non-conjugated
Storage Buffer	Preservative: 0.03% Proclin 300 Constituents: 50% Glycerol, 0.01M PBS, pH 7.4
Purification Method	>95%, Protein G purified
Isotype	IgG
Clonality	Polyclonal
Alias	Lysophosphatidic acid receptor 2 (LPA receptor 2) (LPA-2) (Lysophosphatidic acid receptor Edg-4), LPAR2, EDG4 LPA2
Immunogen Species	Homo sapiens (Human)
Research Area	Signal Transduction
Target Names	LPAR2

Image



Western Blot

Positive WB detected in: HeLa whole cell lysate, MCF-7 whole cell lysate, A549 whole cell lysate, COLO205 whole cell lysate, PC-3 whole cell lysate

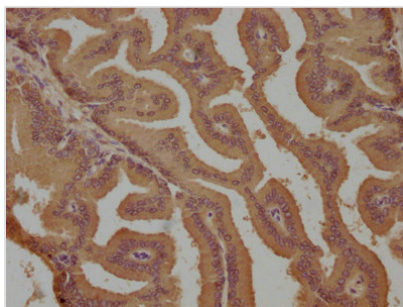
All lanes: LPAR2 antibody at 1:2000

Secondary

Goat polyclonal to rabbit IgG at 1/50000 dilution

Predicted band size: 40 kDa

Observed band size: 40 kDa



IHC image of CSB-PA013048OA01HU diluted at 1:800 and staining in paraffin-embedded human prostate tissue performed on a Leica Bond™ system. After dewaxing and hydration, antigen retrieval was mediated by high pressure in a citrate buffer (pH 6.0). Section was blocked with 10% normal goat serum 30min at RT. Then primary antibody (1% BSA) was incubated at 4°C overnight. The primary is detected by a biotinylated secondary antibody and visualized using an HRP conjugated SP system.

Usage

For Research Use Only. Not for use in diagnostic or therapeutic procedures.