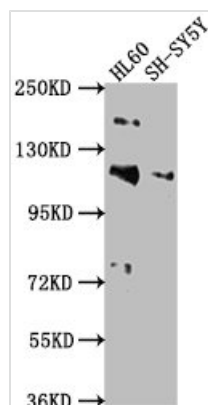




RAPGEF1 Antibody

Product Code	CSB-PA613430NA01HU
Storage	Upon receipt, store at -20°C or -80°C. Avoid repeated freeze.
Uniprot No.	Q13905
Immunogen	Peptide sequence from Human Rap guanine nucleotide exchange factor 1 protein (22-40AA)
Raised In	Rabbit
Species Reactivity	Human
Tested Applications	ELISA, WB; Recommended dilution: WB:1:1000-1:5000
Form	Liquid
Conjugate	Non-conjugated
Storage Buffer	Preservative: 0.03% Proclin 300 Constituents: 50% Glycerol, 0.01M PBS, pH 7.4
Purification Method	>95%, Protein G purified
Isotype	IgG
Clonality	Polyclonal
Alias	Rap guanine nucleotide exchange factor 1 (CRK SH3-binding GNRP) (Guanine nucleotide-releasing factor 2) (Protein C3G), RAPGEF1, GRF2
Immunogen Species	Homo sapiens (Human)
Research Area	Signal Transduction
Target Names	RAPGEF1

Image



Western Blot

Positive WB detected in: HL60 whole cell lysate,
SH-SY5Y whole cell lysate

All lanes: RAPGEF1 antibody at 1:2000

Secondary

Goat polyclonal to rabbit IgG at 1/50000 dilution

Predicted band size: 121, 117, 123 kDa

Observed band size: 121 kDa