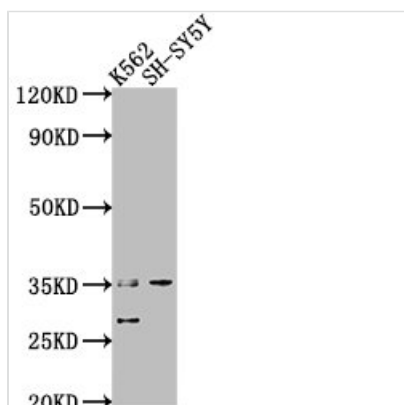




THOC6 Antibody

Product Code	CSB-PA769793LA01HU
Storage	Upon receipt, store at -20°C or -80°C. Avoid repeated freeze.
Uniprot No.	Q86W42
Immunogen	Recombinant Human THO complex subunit 6 homolog protein (56-315AA)
Raised In	Rabbit
Species Reactivity	Human
Tested Applications	ELISA, WB; Recommended dilution: WB:1:1000-1:5000
Form	Liquid
Conjugate	Non-conjugated
Storage Buffer	Preservative: 0.03% Proclin 300 Constituents: 50% Glycerol, 0.01M PBS, pH 7.4
Purification Method	>95%, Protein G purified
Isotype	IgG
Clonality	Polyclonal
Alias	THO complex subunit 6 homolog (Functional spliceosome-associated protein 35) (fSAP35) (WD repeat-containing protein 58), THOC6, WDR58
Immunogen Species	Homo sapiens (Human)
Research Area	Cell Biology
Target Names	THOC6

Image



Western Blot

Positive WB detected in: K562 whole cell lysate,

SH-SY5Y whole cell lysate

All lanes: THOC6 antibody at 1:2000

Secondary

Goat polyclonal to rabbit IgG at 1/50000 dilution

Predicted band size: 38, 35, 33 kDa

Observed band size: 35 kDa

Usage

For Research Use Only. Not for use in diagnostic or therapeutic procedures.