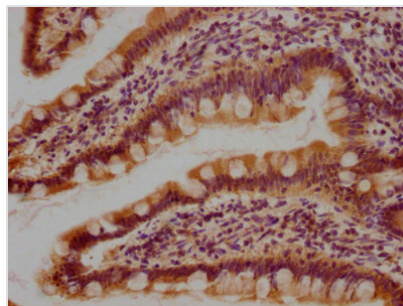




VPS36 Antibody

Product Code	CSB-PA801240OA01HU
Storage	Upon receipt, store at -20°C or -80°C. Avoid repeated freeze.
Uniprot No.	Q86VN1
Immunogen	Peptide sequence from Human Vacuolar protein-sorting-associated protein 36 protein (87-105AA)
Raised In	Rabbit
Species Reactivity	Human
Tested Applications	ELISA, IHC; Recommended dilution: IHC:1:20-1:200
Form	Liquid
Conjugate	Non-conjugated
Storage Buffer	Preservative: 0.03% Proclin 300 Constituents: 50% Glycerol, 0.01M PBS, pH 7.4
Purification Method	Antigen Affinity Purified
Isotype	IgG
Clonality	Polyclonal
Alias	Vacuolar protein-sorting-associated protein 36 (ELL-associated protein of 45 kDa) (ESCRT-II complex subunit VPS36), VPS36, C13orf9 EAP45
Immunogen Species	Homo sapiens (Human)
Research Area	Cell Biology
Target Names	VPS36

Image



IHC image of CSB-PA801240OA01HU diluted at 1:100 and staining in paraffin-embedded human small intestine tissue performed on a Leica BondTM system. After dewaxing and hydration, antigen retrieval was mediated by high pressure in a citrate buffer (pH 6.0). Section was blocked with 10% normal goat serum 30min at RT. Then primary antibody (1% BSA) was incubated at 4°C overnight. The primary is detected by a biotinylated secondary antibody and visualized using an HRP conjugated SP system.