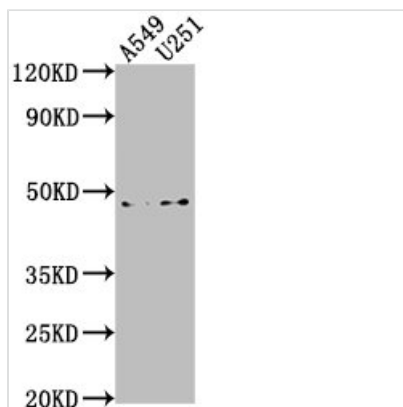




B4GALT6 Antibody

| | |
|----------------------------|---|
| Product Code | CSB-PA871391LA01HU |
| Storage | Upon receipt, store at -20°C or -80°C. Avoid repeated freeze. |
| Uniprot No. | Q9UBX8 |
| Immunogen | Recombinant Human Beta-1,4-galactosyltransferase 6 protein (70-280AA) |
| Raised In | Rabbit |
| Species Reactivity | Human |
| Tested Applications | ELISA, WB; Recommended dilution: WB:1:500-1:2000 |
| Form | Liquid |
| Conjugate | Non-conjugated |
| Storage Buffer | Preservative: 0.03% Proclin 300 Constituents: 50% Glycerol, 0.01M PBS, pH 7.4 |
| Purification Method | Antigen Affinity Purified |
| Isotype | IgG |
| Clonality | Polyclonal |
| Alias | Beta-1,4-galactosyltransferase 6 (Beta-1,4-GalTase 6) (Beta4Gal-T6) (b4Gal-T6) (UDP-Gal:beta-GlcNAc beta-1,4-galactosyltransferase 6) (UDP-galactose:beta-N-acetylglucosamine beta-1,4-galactosyltransferase 6) [Includes: Glucosylceramide beta-1,4-galactosyltransferase (EC 2.4.1.274) (Lactosylceramide synthase) (LacCer synthase) (UDP-Gal:glucosylceramide beta-1,4-galactosyltransferase)], B4GALT6 |
| Immunogen Species | Homo sapiens (Human) |
| Research Area | Signal Transduction |
| Target Names | B4GALT6 |

Image



Western Blot

Positive WB detected in: A549 whole cell lysate, U251 whole cell lysate

All lanes: B4GALT6 antibody at 1:1000

Secondary

Goat polyclonal to rabbit IgG at 1/50000 dilution

Predicted band size: 45, 41 kDa

Observed band size: 45 kDa

Usage

For Research Use Only. Not for use in diagnostic or therapeutic procedures.