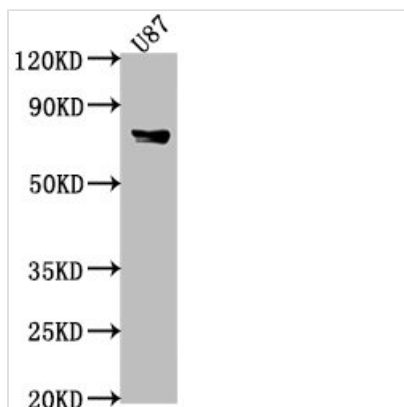




FEM1B Antibody

Product Code	CSB-PA891718LA01HU
Storage	Upon receipt, store at -20°C or -80°C. Avoid repeated freeze.
Uniprot No.	Q9UK73
Immunogen	Recombinant Human Protein fem-1 homolog B protein (400-627AA)
Raised In	Rabbit
Species Reactivity	Human, Mouse
Tested Applications	ELISA, WB; Recommended dilution: WB:1:1000-1:5000
Form	Liquid
Conjugate	Non-conjugated
Storage Buffer	Preservative: 0.03% Proclin 300 Constituents: 50% Glycerol, 0.01M PBS, pH 7.4
Purification Method	>95%, Protein G purified
Isotype	IgG
Clonality	Polyclonal
Alias	Protein fem-1 homolog B (FEM1b) (FEM1-beta) (Fem-1-like death receptor-binding protein alpha) (Fem-1-like in apoptotic pathway protein alpha) (F1A-alpha), FEM1B, F1AA KIAA0396
Immunogen Species	Homo sapiens (Human)
Research Area	Cell Biology
Target Names	FEM1B

Image



Western Blot

Positive WB detected in: U87 whole cell lysate,
 Mouse heart tissue
 All lanes: FEM1B antibody at 1:2000
 Secondary
 Goat polyclonal to rabbit IgG at 1/50000 dilution
 Predicted band size: 71 kDa
 Observed band size: 71 kDa

Usage

For Research Use Only. Not for use in diagnostic or therapeutic procedures.