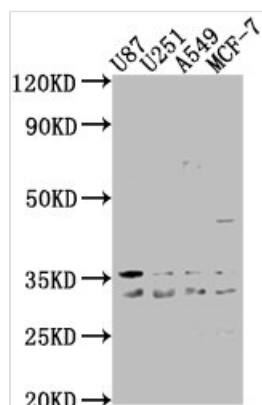




ATP6V1D Antibody

Product Code	CSB-PA897507LA01HU
Storage	Upon receipt, store at -20°C or -80°C. Avoid repeated freeze.
Uniprot No.	Q9Y5K8
Immunogen	Recombinant Human V-type proton ATPase subunit D protein (1-247AA)
Raised In	Rabbit
Species Reactivity	Human
Tested Applications	ELISA, WB; Recommended dilution: WB:1:1000-1:5000
Form	Liquid
Conjugate	Non-conjugated
Storage Buffer	Preservative: 0.03% Proclin 300 Constituents: 50% Glycerol, 0.01M PBS, pH 7.4
Purification Method	>95%, Protein G purified
Isotype	IgG
Clonality	Polyclonal
Alias	V-type proton ATPase subunit D (V-ATPase subunit D) (V-ATPase 28 kDa accessory protein) (Vacuolar proton pump subunit D), ATP6V1D, ATP6M VATD
Immunogen Species	Homo sapiens (Human)
Research Area	Signal Transduction
Target Names	ATP6V1D

Image



Western Blot

Positive WB detected in: U87 whole cell lysate, U251 whole cell lysate, A549 whole cell lysate, MCF-7 whole cell lysate

All lanes: ATP6V1D antibody at 1:2000

Secondary

Goat polyclonal to rabbit IgG at 1/50000 dilution

Predicted band size: 29 kDa

Observed band size: 29 kDa