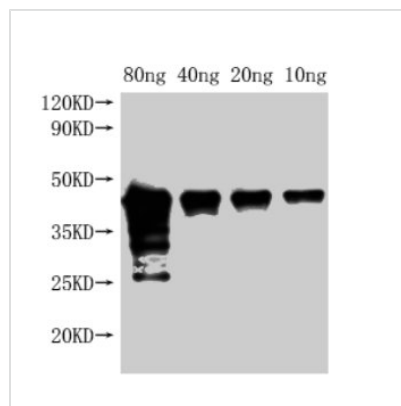




Met Antibody

Product Code	CSB-PA27899A0Rb
Storage	Upon receipt, store at -20°C or -80°C. Avoid repeated freeze.
Uniprot No.	V5KYYX7
Immunogen	Recombinant Locusta migratoria Met protein (1-329AA)
Raised In	Rabbit
Species Reactivity	Locusta migratoria
Tested Applications	ELISA, WB; Recommended dilution: WB:1:1000-1:5000
Form	Liquid
Conjugate	Non-conjugated
Storage Buffer	Preservative: 0.03% Proclin 300 Constituents: 50% Glycerol, 0.01M PBS, pH 7.4
Purification Method	>95%, Protein G purified
Isotype	IgG
Clonality	Polyclonal
Alias	Met protein, Met
Immunogen Species	Locusta migratoria (Migratory locust)
Research Area	Signal Transduction
Target Names	Met

Image



Western Blot
 Positive WB detected in Recombinant protein
 All lanes: Met antibody at 1:2000
 Secondary
 Goat polyclonal to rabbit IgG at 1/50000 dilution
 Predicted band size: 42 kDa
 Observed band size: 45 kDa

Usage

For Research Use Only. Not for use in diagnostic or therapeutic procedures.