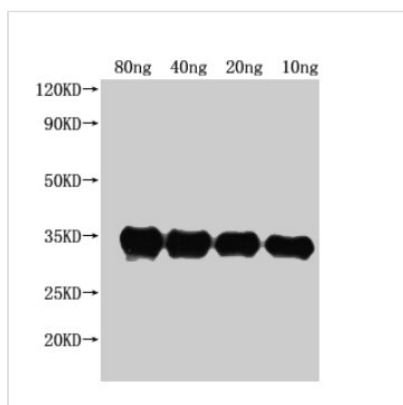




pdeH Antibody

Product Code	CSB-PA336327LA01ENV
Storage	Upon receipt, store at -20°C or -80°C. Avoid repeated freeze.
Uniprot No.	P37646
Immunogen	Recombinant Escherichia coli Cyclic di-GMP phosphodiesterase PdeH protein (1-255AA)
Raised In	Rabbit
Species Reactivity	Escherichia coli
Tested Applications	ELISA, WB; Recommended dilution: WB:1:2000-1:10000
Form	Liquid
Conjugate	Non-conjugated
Storage Buffer	Preservative: 0.03% Proclin 300 Constituents: 50% Glycerol, 0.01M PBS, pH 7.4
Purification Method	>95%, Protein G purified
Isotype	IgG
Clonality	Polyclonal
Alias	Cyclic di-GMP phosphodiesterase PdeH, pdeH, yhjH
Immunogen Species	Escherichia coli (strain K12)
Research Area	Others
Target Names	pdeH

Image



Western Blot

Positive WB detected in Recombinant protein

All lanes: pdeH antibody at 1:2500

Secondary

Goat polyclonal to rabbit IgG at 1/50000 dilution

Predicted band size: 35 kDa

Observed band size: 34 kDa

Usage

For Research Use Only. Not for use in diagnostic or therapeutic procedures.