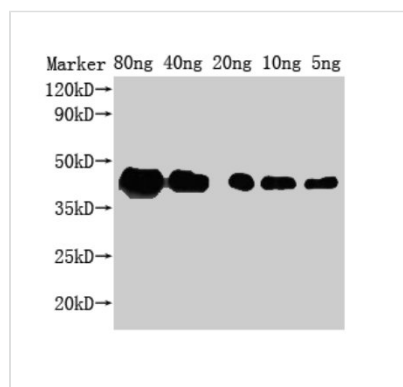




ZIP1 Antibody

Product Code	CSB-PA339148LA01SVG
Storage	Upon receipt, store at -20°C or -80°C. Avoid repeated freeze.
Uniprot No.	P31111
Immunogen	Recombinant Saccharomyces cerevisiae Synaptonemal complex protein ZIP1 protein (1-227AA)
Raised In	Rabbit
Species Reactivity	Saccharomyces cerevisiae
Tested Applications	ELISA, WB; Recommended dilution: WB:1:1000-1:5000
Form	Liquid
Conjugate	Non-conjugated
Storage Buffer	Preservative: 0.03% Proclin 300 Constituents: 50% Glycerol, 0.01M PBS, pH 7.4
Purification Method	>95%, Protein G purified
Isotype	IgG
Clonality	Polyclonal
Alias	Synaptonemal complex protein ZIP1, ZIP1
Immunogen Species	Saccharomyces cerevisiae (strain ATCC 204508 / S288c) (Baker's yeast)
Research Area	Others
Target Names	ZIP1

Image



Western Blot

Positive WB detected in Recombinant protein

All lanes: ZIP1 antibody at 1:2000

Secondary

Goat polyclonal to rabbit IgG at 1/50000 dilution

Predicted band size: 29 kDa

Observed band size: 43 kDa

Usage

For Research Use Only. Not for use in diagnostic or therapeutic procedures.