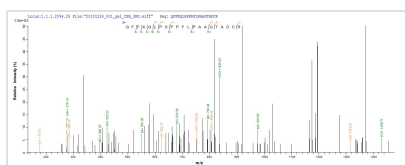




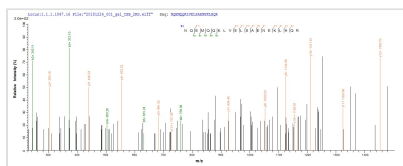
Recombinant Human CCAAT/enhancer-binding protein delta (CEBPD)

Product Code	CSB-EP005182HU
Abbreviation	Recombinant Human CEBPD protein
Storage	The shelf life is related to many factors, storage state, buffer ingredients, storage temperature and the stability of the protein itself. Generally, the shelf life of liquid form is 6 months at -20°C/-80°C. The shelf life of lyophilized form is 12 months at -20°C/-80°C.
Uniprot No.	P49716
Storage Buffer	Tris-based buffer,50% glycerol
Product Type	Recombinant Protein
Immunogen Species	Homo sapiens (Human)
Purity	≥ 90% as determined by SDS-PAGE.
Sequence	SAALFSLDGPARGAPWPAEPAPFYEPGRAGKPGRGAEPGALGEPGAAAPAM YDDESAIDFSAYIDSMAAVPTLELCHDELFDLDFNSNHKAGGAGPLELLPGGPA RPLGPGPAAPRLLKREPDWGDGDAPGSLLPAQVAACAQTVVSLAAAGQPTTP TSPEPPRSSPRQTPAPGPAREKSAGKRGPDGRGSPEYRQRRERNNIAVRKSR DKAKRRNQEMQQKLVELSAENEKLHQRVEQLTRDLAGLRQFFKQLPSPFFLP AAGTADCR
Research Area	Others
Source	E.coli
Target Names	CEBPD
Protein Names	Recommended name: CCAAT/enhancer-binding protein delta Short name= C/EBP delta Alternative name(s): Nuclear factor NF-IL6-beta Short name= NF-IL6-beta
Expression Region	2-269aa
Notes	Repeated freezing and thawing is not recommended. Store working aliquots at 4°C for up to one week.
Tag Info	N-terminal 10xHis-tagged and C-terminal Myc-tagged
Mol. Weight	35.8 kDa
Protein Length	Full Length of Mature Protein

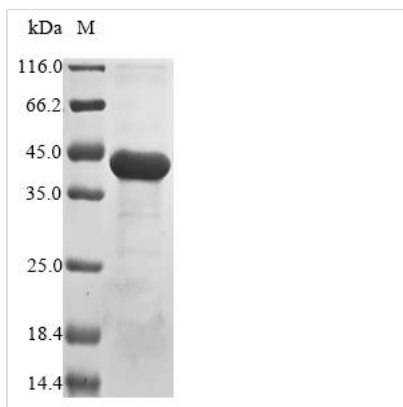
Image



Based on the SEQUEST from database of E.coli host and target protein, the LC-MS/MS Analysis result of CSB-EP005182HU could indicate that this peptide derived from E.coli-expressed Homo sapiens (Human) CEBPD.



Based on the SEQUEST from database of E.coli host and target protein, the LC-MS/MS Analysis result of CSB-EP005182HU could indicate that this peptide derived from E.coli-expressed Homo sapiens (Human) CEBPD.



(Tris-Glycine gel) Discontinuous SDS-PAGE (reduced) with 5% enrichment gel and 15% separation gel.

Reconstitution

We recommend that this vial be briefly centrifuged prior to opening to bring the contents to the bottom. Please reconstitute protein in deionized sterile water to a concentration of 0.1-1.0 mg/mL. We recommend to add 5-50% of glycerol (final concentration) and aliquot for long-term storage at -20°C/-80°C. Our default final concentration of glycerol is 50%. Customers could use it as reference.

Shelf Life

The shelf life is related to many factors, storage state, buffer ingredients, storage temperature and the stability of the protein itself. Generally, the shelf life of liquid form is 6 months at -20°C/-80°C. The shelf life of lyophilized form is 12 months at -20°C/-80°C.